

AIRPORT CHARTS KTO  
NORTH KOREA, CHINA, RUSSIA

Combatsimchecklist series

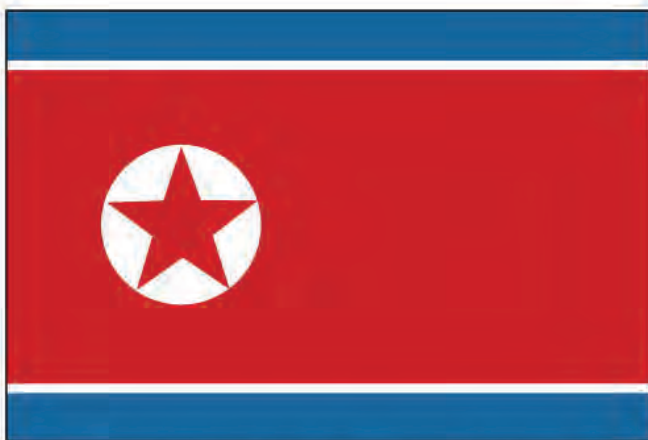
NOT FOR REAL NAVIGATION  
FALCON BMS 4.32 ONLY

---

31<sup>st</sup> AUGUST 2011

© Combatsimchecklist 2011

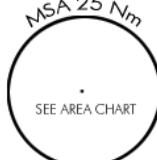
KOREAN NAVIGATION VOLUME  
AIRPORT CHARTS  
NORTH KOREA

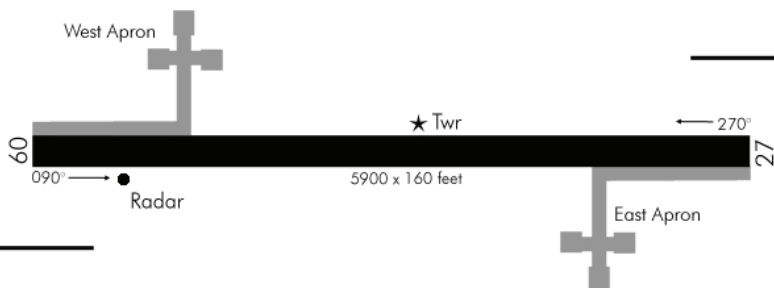


NOT FOR REAL NAVIGATION - FALCON 4 BMS ONLY

## AIRPORT DIAGRAM

Date: 31 July 2011

TACAN:	UNICOM:	LANDING PROCEDURE:	TRANS LEVEL:	TRANS ALT:	
N.A.	233.7/127.7	VISUAL - LEFT TURN	FL 140	14000ft	



N  
Not to Scale  
MONITOR UNICOM FREQUENCY

## NOTAM:

Airstrips are UNCONTROLLED airports! As such you will not get any ATC communication. Landing safety is the pilot's responsibility. Pilots should tune in the UNICOM frequency and state name of airstrip, intentions, then call downwind, base, final and runway vacated upon landing. Upon departure, pilots should state taking the active runway, airborne and departing the pattern. Active runway depending on wind conditions.

## CONCERNED AIRSTRIPS IN NORTH KOREA:

Ayang-Ni - Hoeyang HS - Ich'on - Kojo HS - Kwaksan - Nuch'on - Okpyong Ni - Panghyon - Pongson - Sangwon - Sonch'on - Sugam-Ni Taebukpo-Ri - tangch'on - Yonghung HS

## AIRPORT DIAGRAM

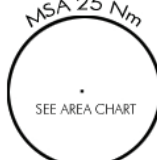
NOT FOR REAL NAVIGATION - FALCON 4 BMS ONLY

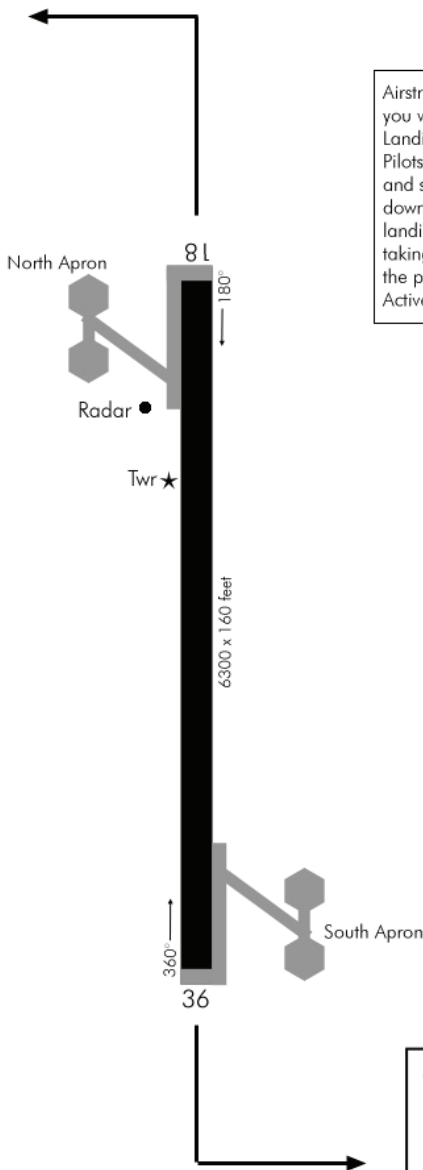
© COMBATSIM CHECKLISTS 2011

AIRSTRIPS EAST-WEST  
NORTH KOREA

## AIRPORT DIAGRAM

Date: 31 July 2011

TACAN:	UNICOM:	LANDING PROCEDURE:	TRANS LEVEL:	TRANS ALT:	
N.A.	231.4/123.4	VISUAL - LEFT TURN	FL 140	14000ft	



## NOTAM:

Airstrips are UNCONTROLLED airports! As such you will not get any ATC communication. Landing safety is the pilot's responsibility. Pilots should tune in the UNICOM frequency and state name of airstrip, intentions, then call downwind, base, final and runway vacated upon landing. Upon departure, pilots should state taking the active runway, airborne and departing the pattern. Active runway depending on wind conditions.



Not to Scale

MONITOR UNICOM FREQUENCY

## CONCERNED AIRSTRIPS IN SOUTH KOREA:

Kaech'on  
Kilchu  
Koksan HS  
Kyongsong

## AIRPORT DIAGRAM

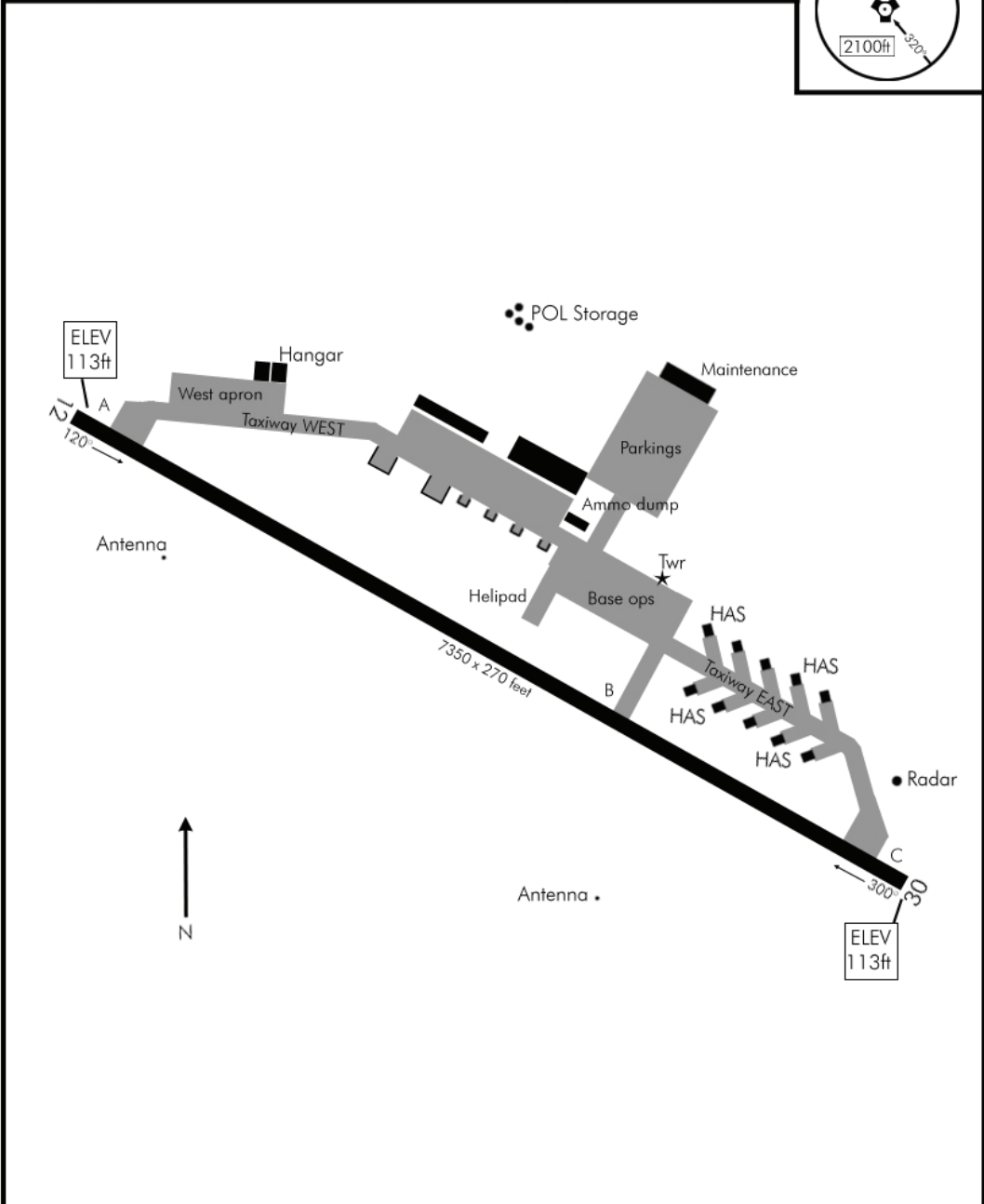
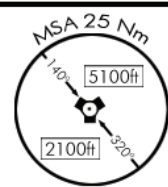
NOT FOR REAL NAVIGATION - FALCON 4 BMS ONLY

© COMBATSIM CHECKLISTS 2011

AIRPORT DIAGRAM

Date: 26 May 2011

TACAN:	TWR:	TRANS ALT:	TRANS LEVEL:	GPS:	ELEV:
N.A.	280.4/118.3	14000ft	FL140	N38°02,223' E126°36.807'	113'

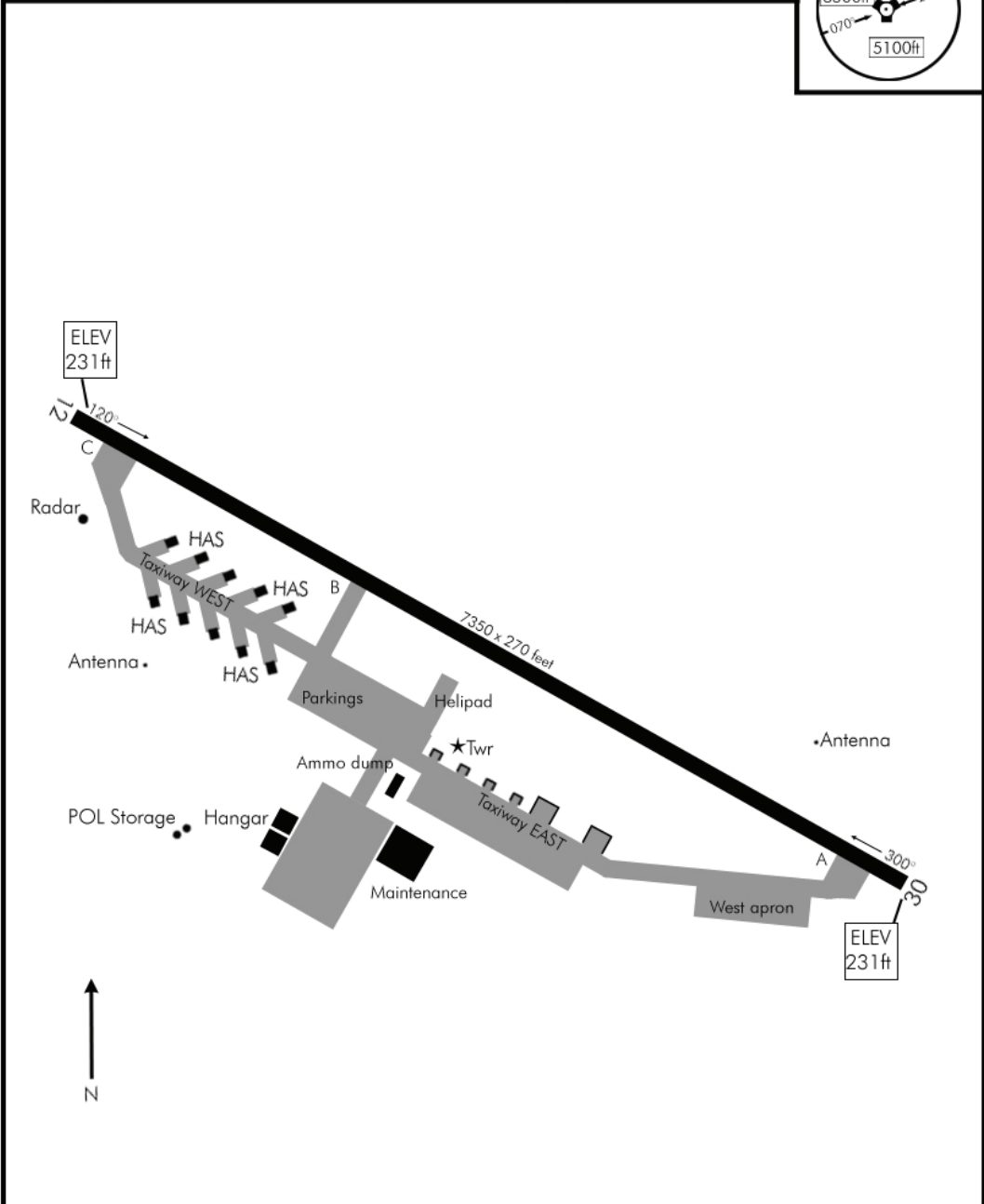
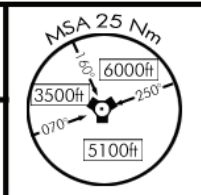


AIRPORT DIAGRAM

AIRPORT DIAGRAM

Date: 26 May 2011

TACAN:	TWR:	TRANS ALT:	TRANS LEVEL:	GPS:	ELEV:
N.A.	337.6/122.4	14000ft	FL140	N38°42,9593 E126°32.227'	231'



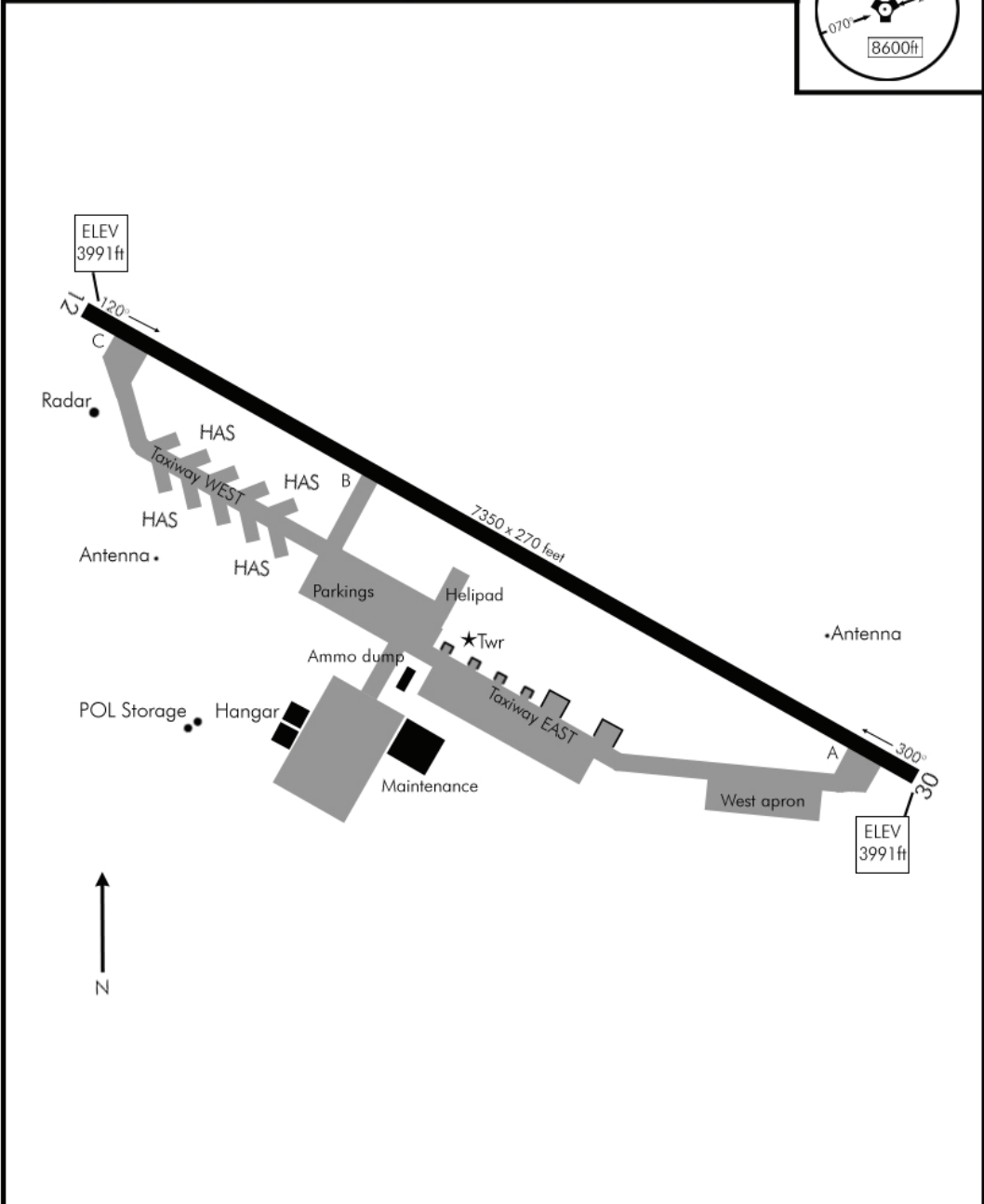
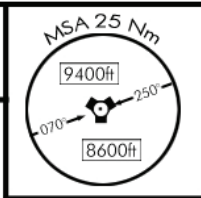
AIRPORT DIAGRAM

NOT FOR REAL NAVIGATION - FALCON 4 BMS ONLY

AIRPORT DIAGRAM

Date: 27 May 2011

TACAN:	TWR:	TRANS ALT:	TRANS LEVEL:	GPS:	ELEV:
N.A.	368.5/136.3	14000ft	FL140	N40°43,756' E129°50.507'	3991'



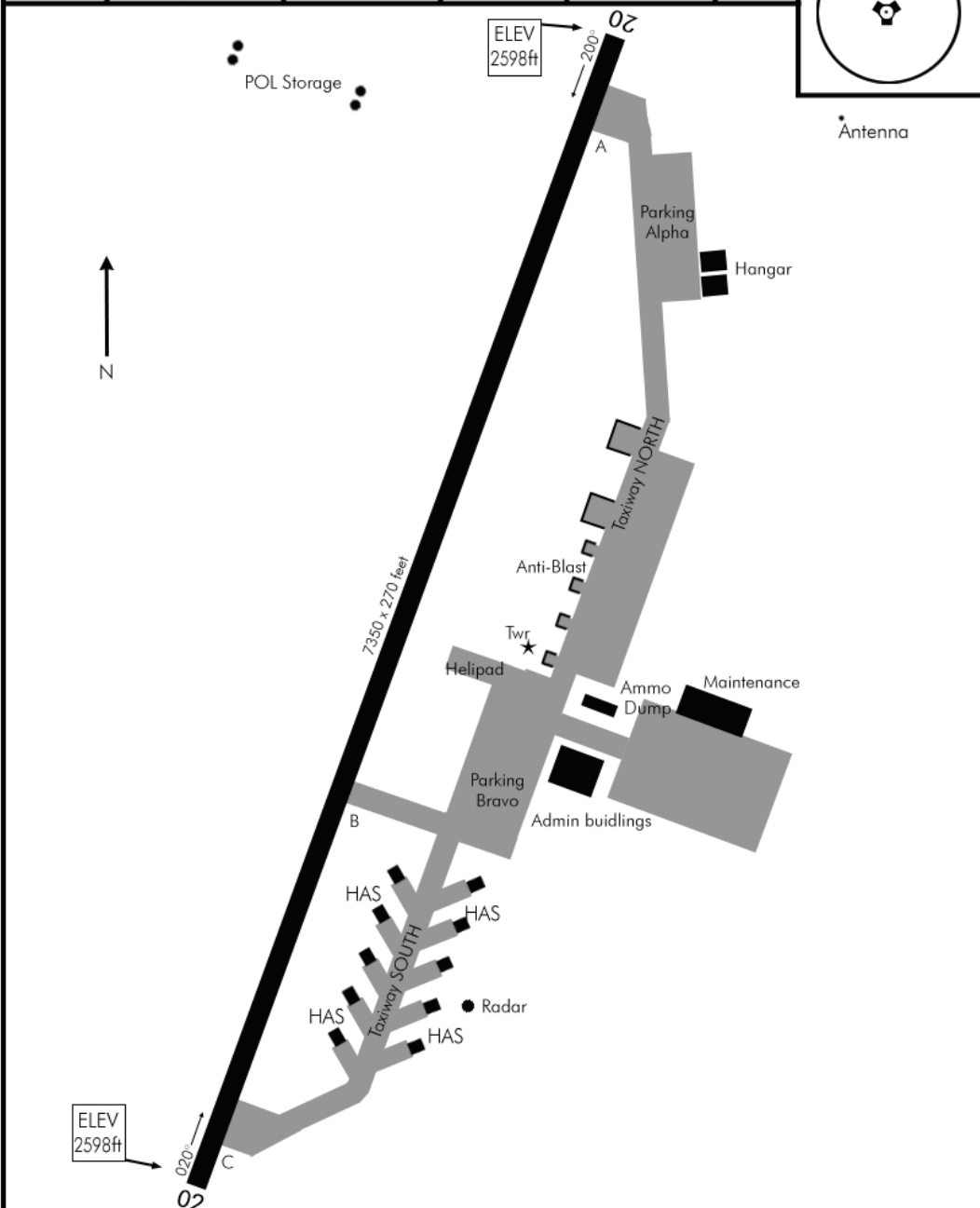
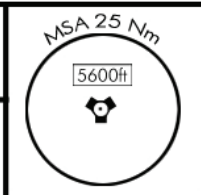
AIRPORT DIAGRAM

© COMBATSIM CHECKLISTS 2011

AIRPORT DIAGRAM

Date: 30 May 2011

TACAN:	TWR:	TRANS LEVEL:	TRANS ALT:	GPS:	ELEV:
N.A	240.9/118.57	FL140	14000 Ft	N38°41,300' E128°37.565'	2598'



AIRPORT DIAGRAM

© COMBATSIM CHECKLISTS 2011

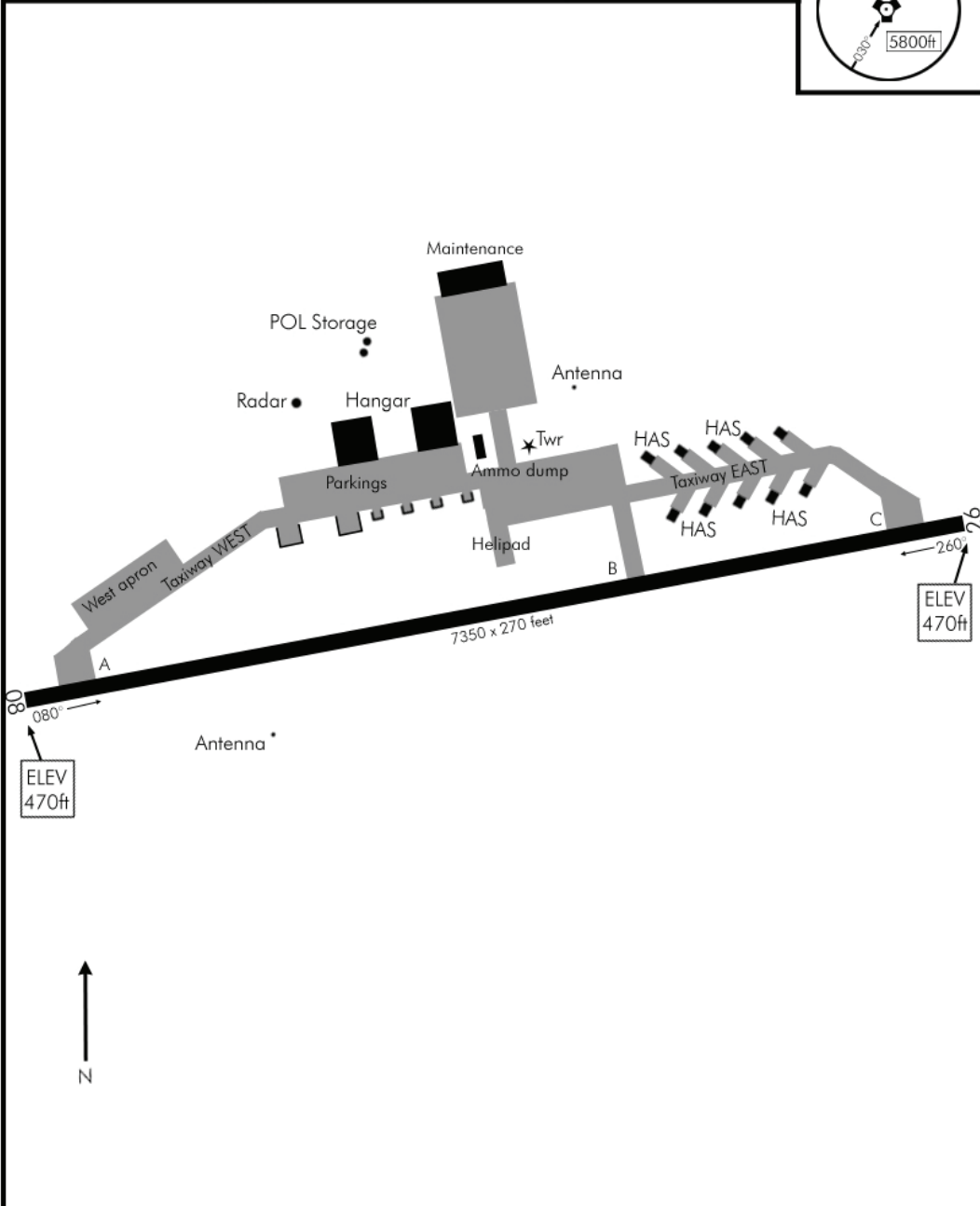
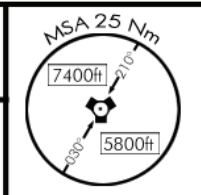


AIRPORT DIAGRAM

Date: 1 June 2011

IWON  
NORTH KOREA

TACAN:	TWR:	TRANS LEVEL:	TRANS ALT:	GPS:	ELEV:
N.A.	234.4/122.4	FL140	14000ft	N40°24,718' E130°26.856'	470'



AIRPORT DIAGRAM

© COMBATSIM CHECKLISTS 2011

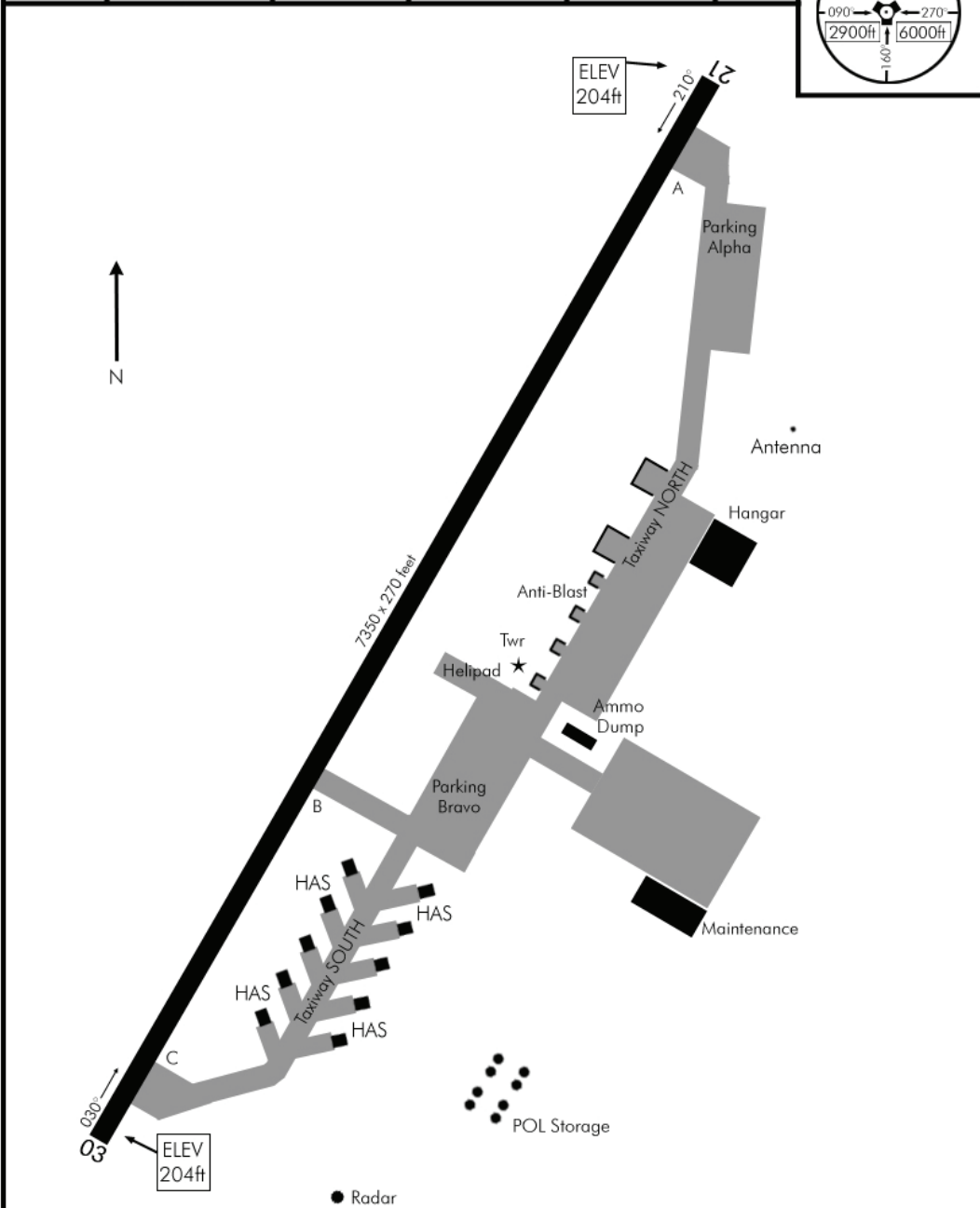
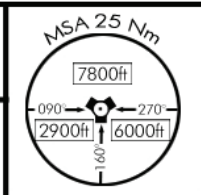
NOT FOR REAL NAVIGATION - FALCON 4 BMS ONLY

IWON  
NORTH KOREA

AIRPORT DIAGRAM

Date: 30 May 2011

TACAN:	TWR:	TRANS ALT:	TRANS LEVEL:	GPS:	ELEV:
N.A.	350.0/137.5	14000ft	FL140	N39°47,400' E126°42.427'	204'



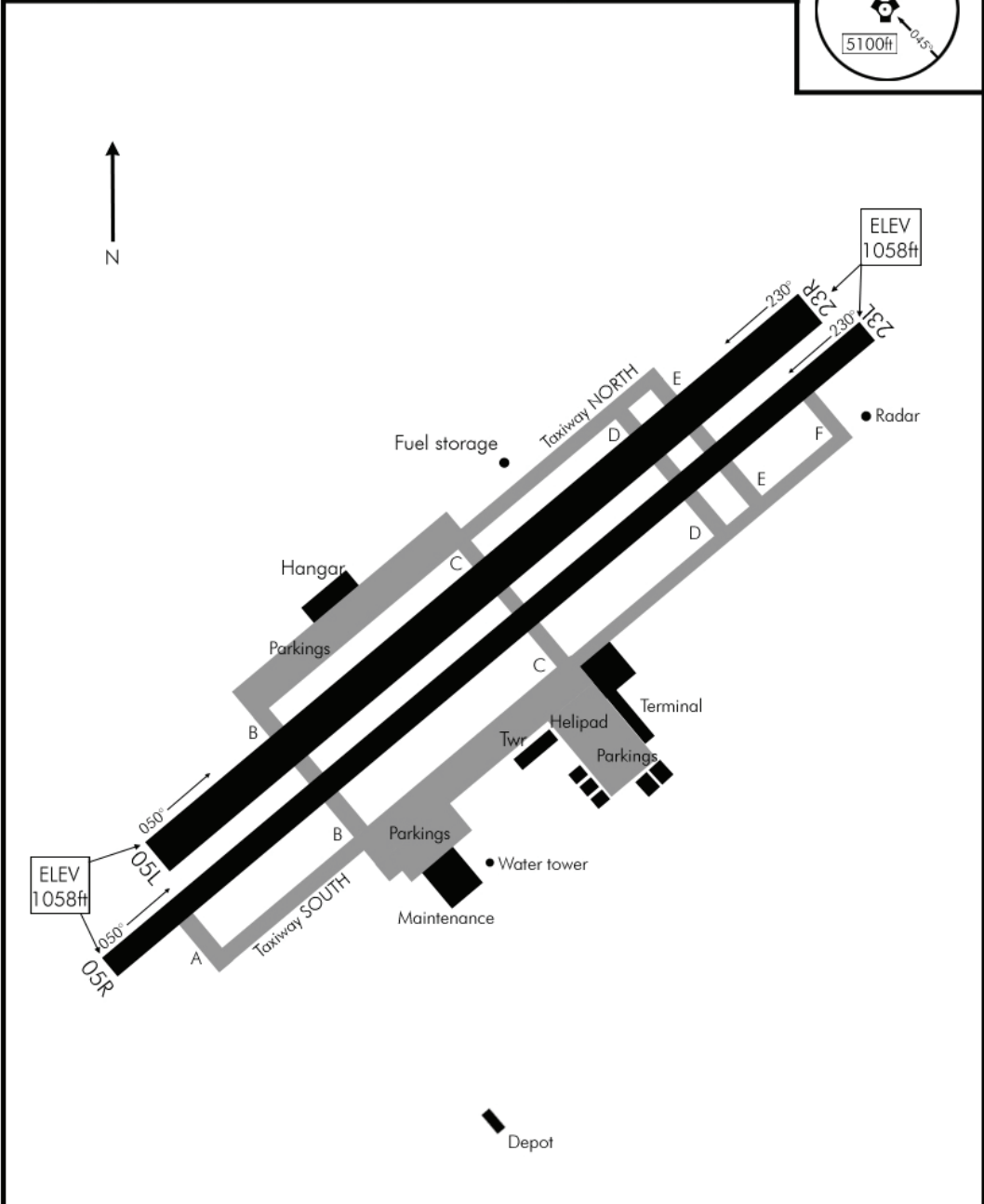
AIRPORT DIAGRAM

NOT FOR REAL NAVIGATION - FALCON 4 BMS ONLY

AIRPORT DIAGRAM

Date: 26 May 2011

TACAN:	TWR:	TRANS LEVEL:	TRANS ALT:	GPS:	ELEV:
N.A.	318.2/127.7	FL140	14000ft	N38°48,157' E127°32.883'	1058'

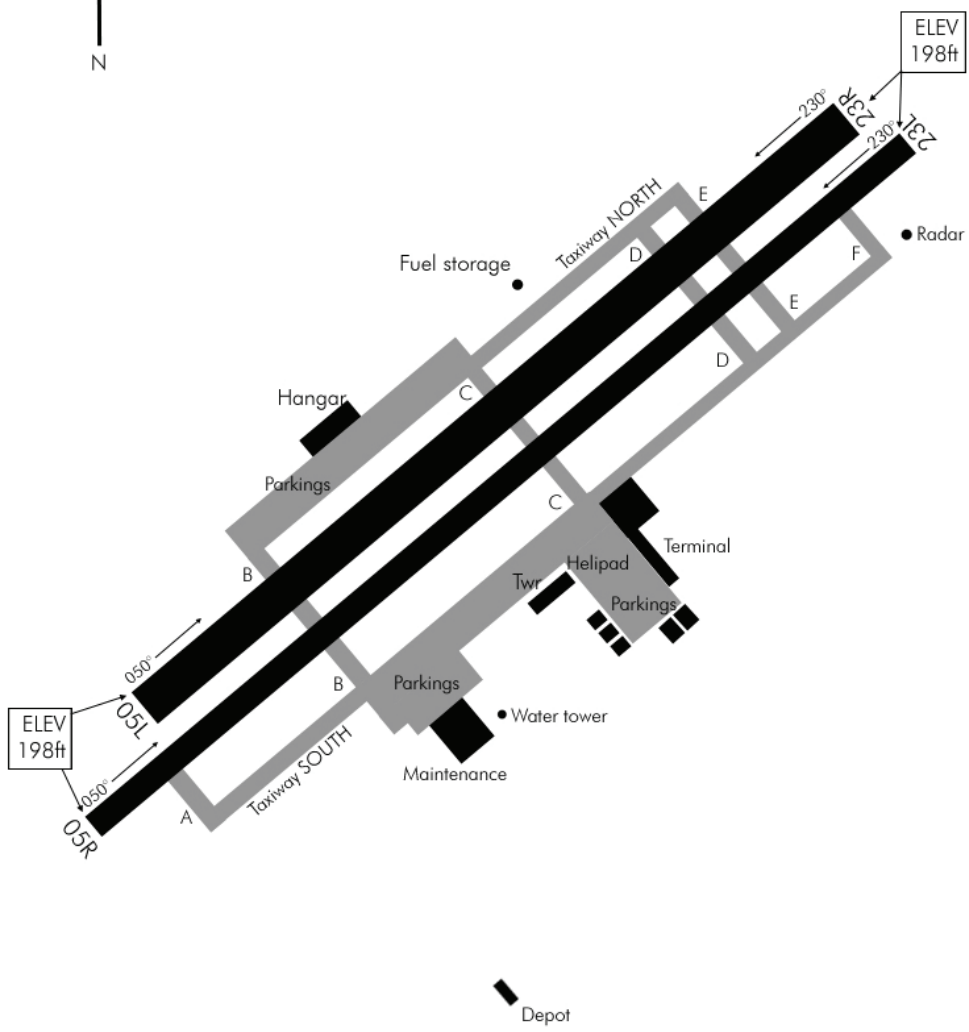
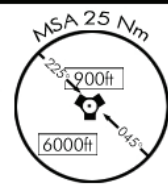


AIRPORT DIAGRAM

AIRPORT DIAGRAM

Date: 26 May 2011

TACAN:	TWR:	TRANS LEVEL:	TRANS ALT:	GPS:	ELEV:
N.A.	388.7/128.0	FL140	14000ft	N38°54.190' E129°17.199'	198'



AIRPORT DIAGRAM

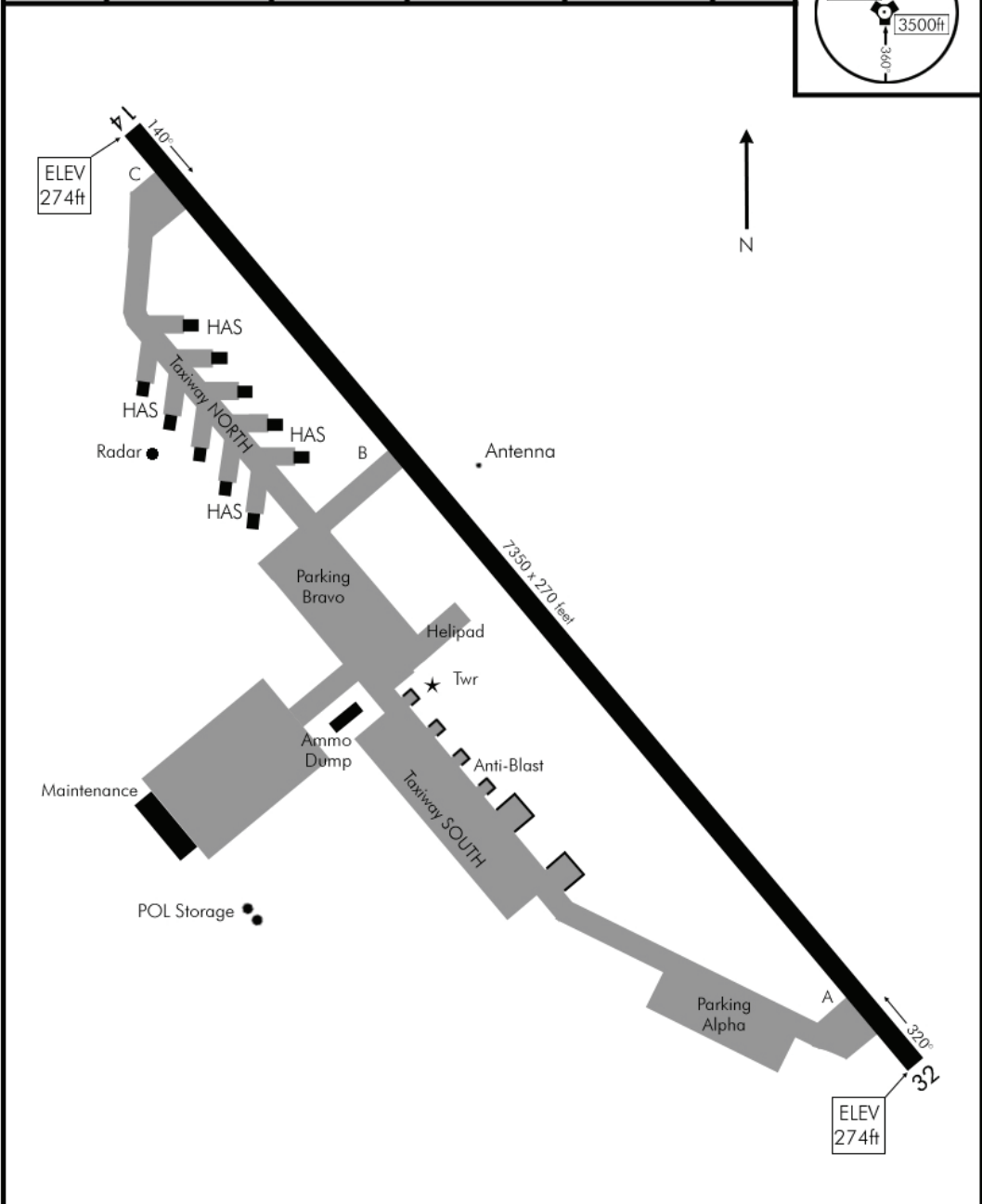
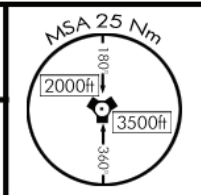
NOT FOR REAL NAVIGATION - FALCON 4 BMS ONLY

AIRPORT DIAGRAM

Date: 26 May 2011

NORTH KOREA

TACAN:	TWR:	TRANS ALT:	TRANS LEVEL:	GPS:	ELEV:
N.A.	349.4/125.9	14000ft	FL140	N38°26,721' E125°29.149'	274'



AIRPORT DIAGRAM

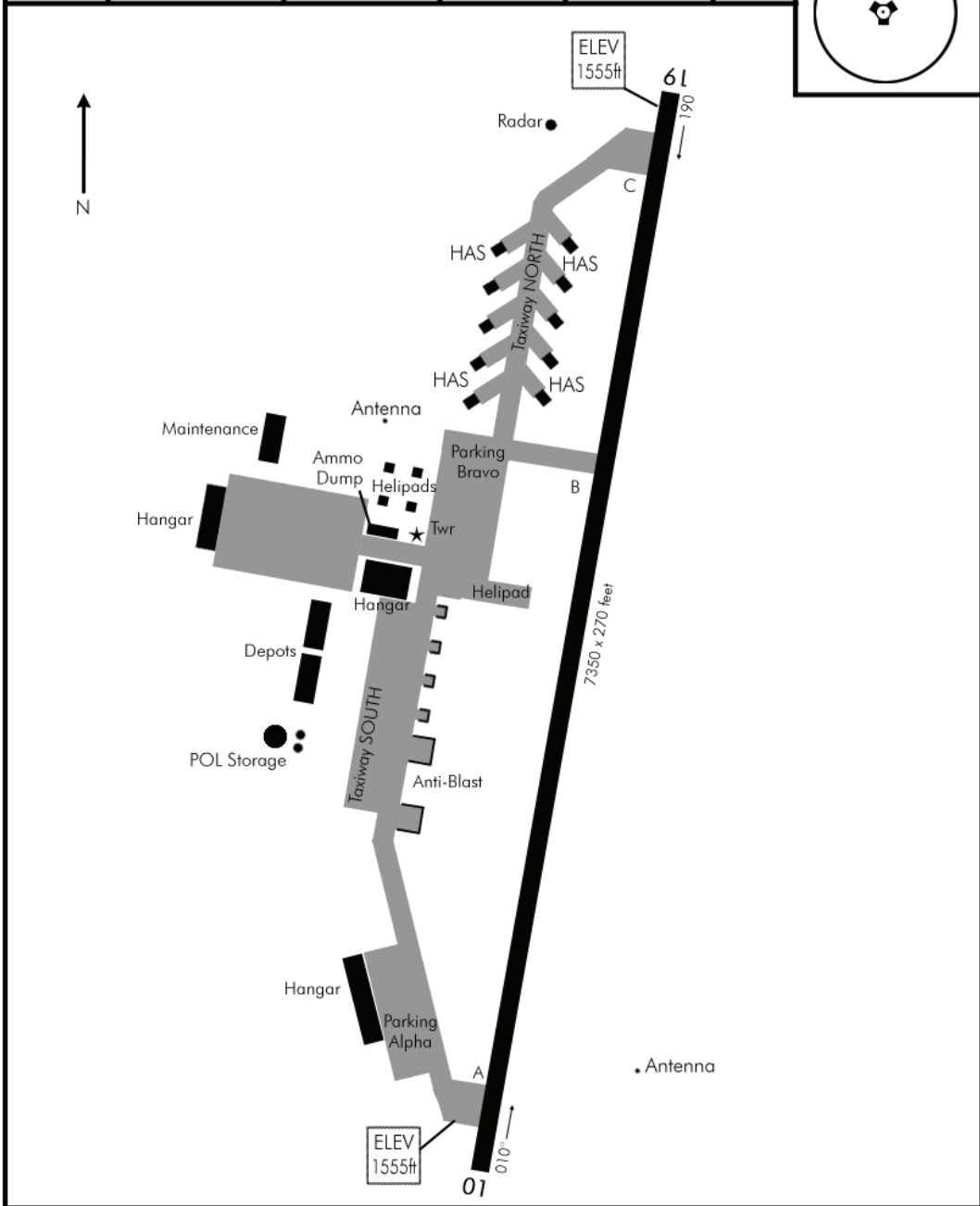
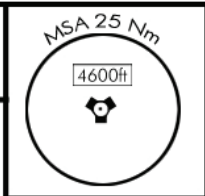
© COMBATSIM CHECKLISTS 2011

AIROPORT DIAGRAM

Date: 31 May 2011

PEOPLE'S REPUBLIC OF CHINA

TACAN:	TWR:	TRANS LEVEL:	TRANS ALT:	GPS:	ELEV:
N.A	390.8/150.12	FL140	14000 Ft	N42°09,997' E126°05.412'	1555'



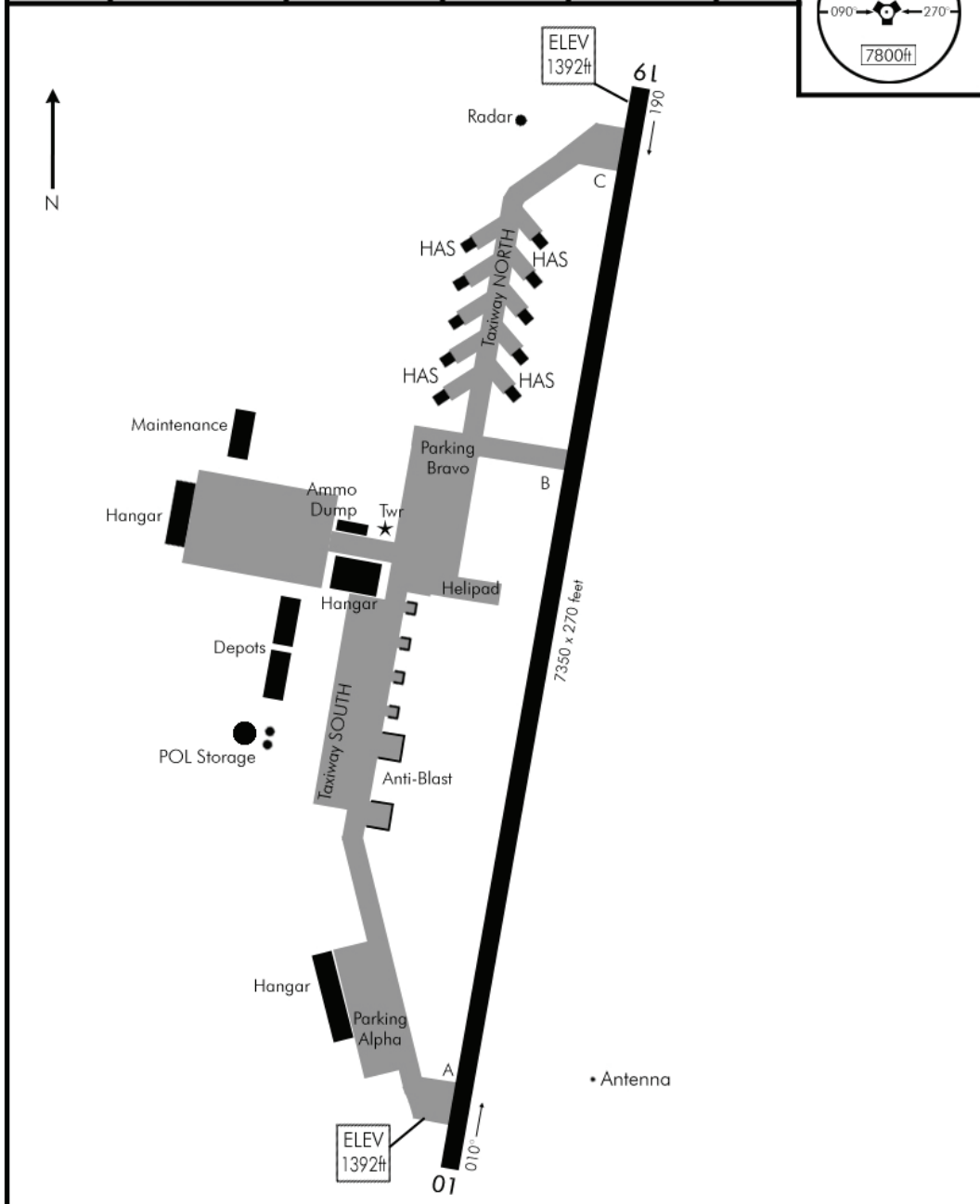
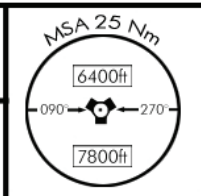
AIROPORT DIAGRAM

NOT FOR REAL NAVIGATION - FALCON 4 BMS ONLY

AIRPORT DIAGRAM

Date: 31 May 2011

TACAN: N.A	TWR: 242.4/130.02	TRANS LEVEL: FL140	TRANS ALT: 14000 Ft	GPS: N41°11,801' E127°27.140'	ELEV: 1392'
---------------	----------------------	-----------------------	------------------------	-------------------------------------	----------------



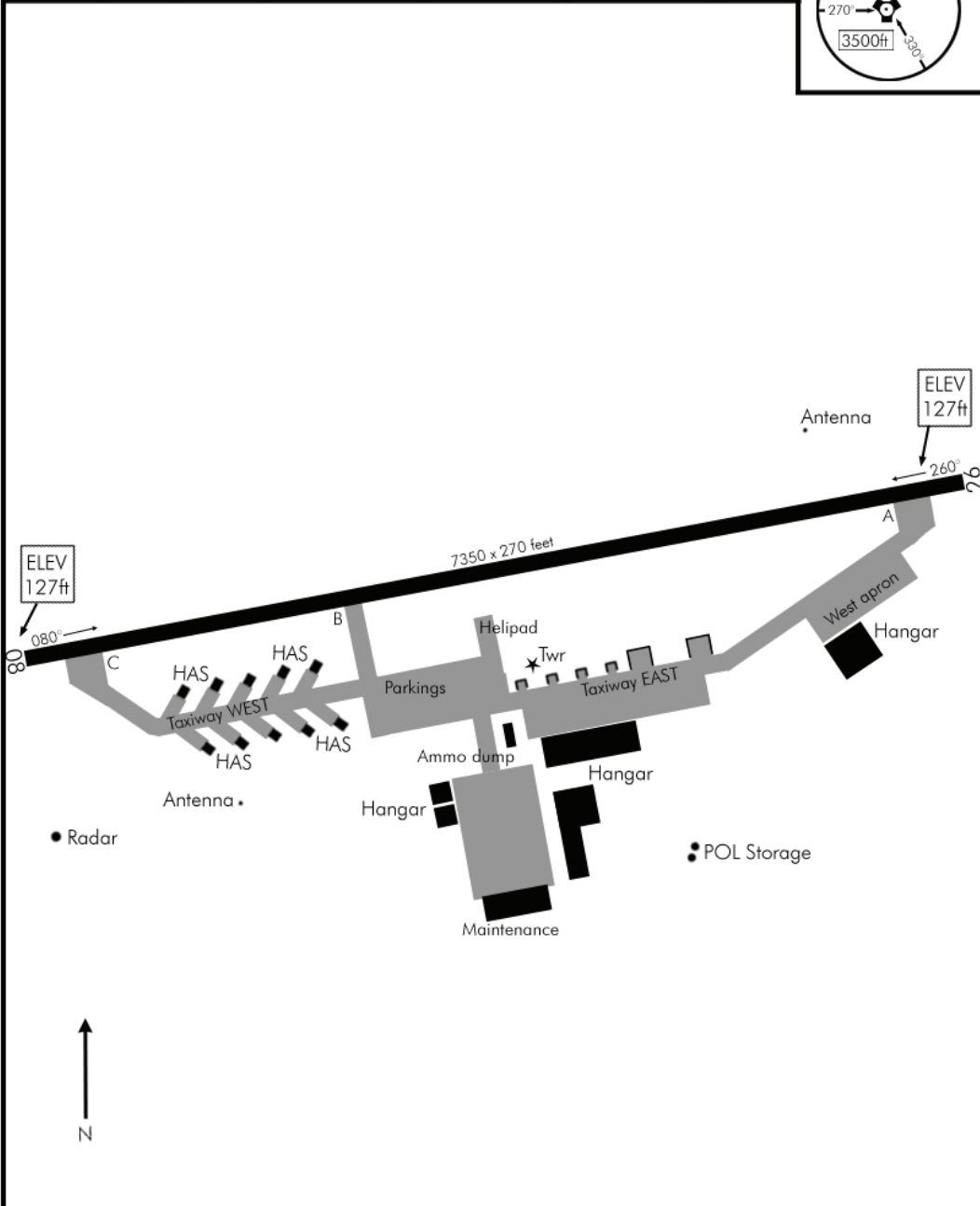
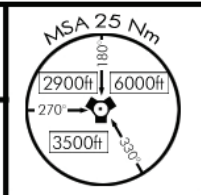
AIRPORT DIAGRAM

NOT FOR REAL NAVIGATION - FALCON 4 BMS ONLY

AIRPORT DIAGRAM

Date: 31 May 2011

TACAN: 059X	TWR: 225.3/128.65	TRANS LEVEL: FL140	TRANS ALT: 14000ft	GPS: N39°03,544' E126°39.615'	ELEV: 127'
----------------	----------------------	-----------------------	-----------------------	-------------------------------------	---------------



AIRPORT DIAGRAM

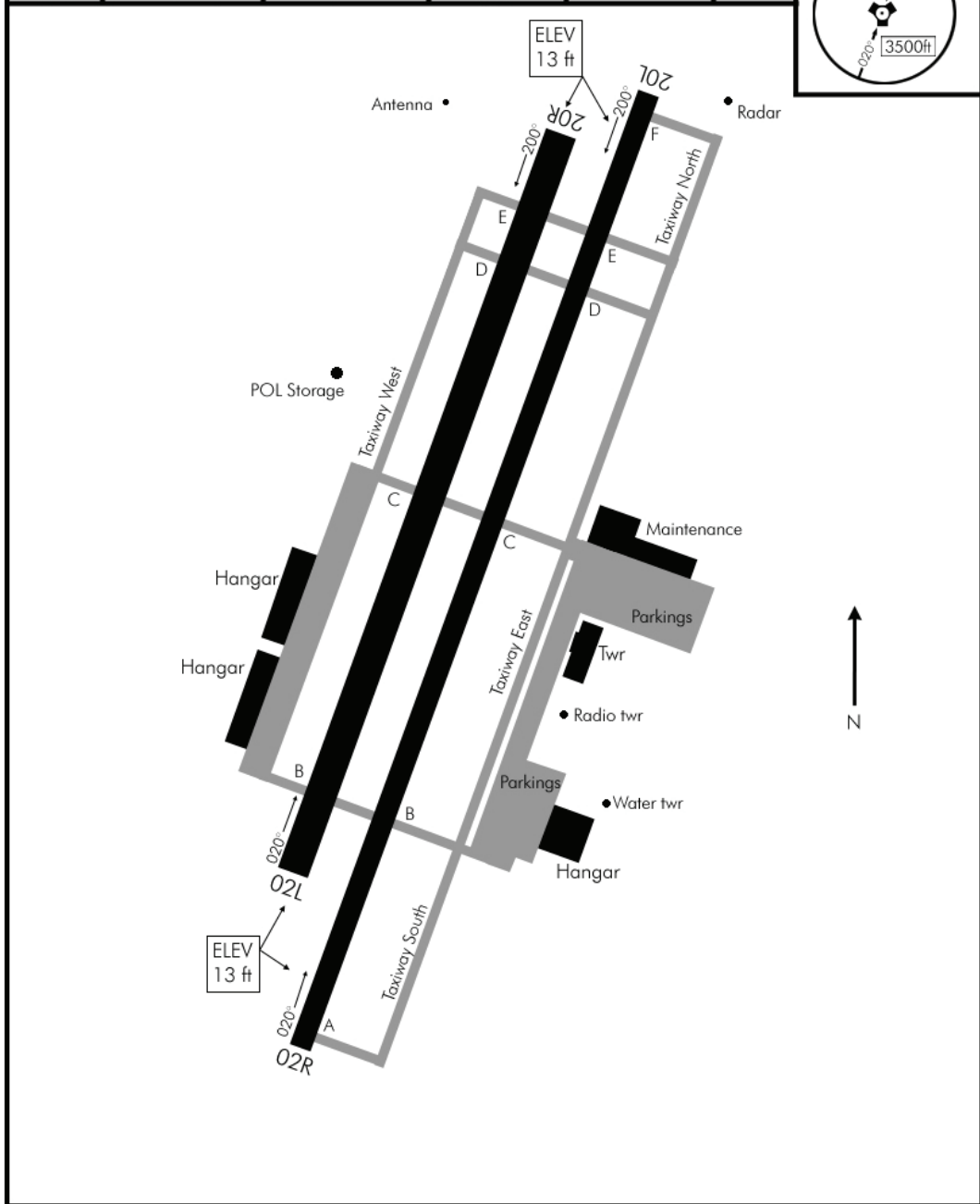
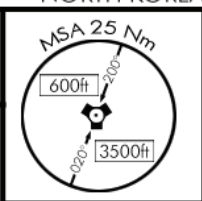
NOT FOR REAL NAVIGATION - FALCON 4 BMS ONLY



AIRPORT DIAGRAM

Date: 1 June 2011

TACAN:	TWR:	TRANS LEVEL:	TRANS ALT:	GPS:	ELEV:
N.A.	302.4/129.1	FL140	14000 Ft	N38°57,412' E125°45.757'	013'



AIRPORT DIAGRAM

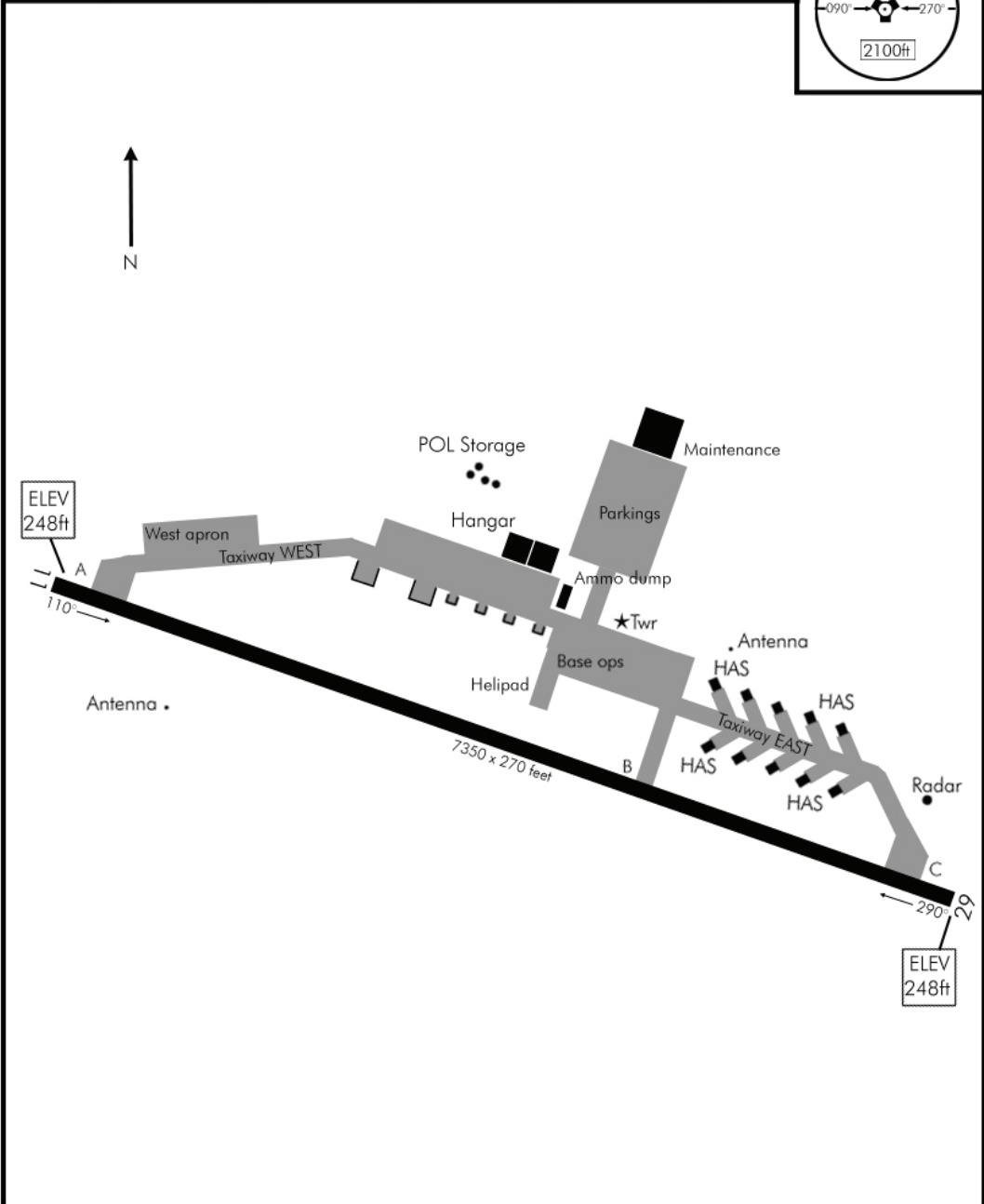
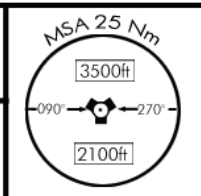
NOT FOR REAL NAVIGATION - FALCON 4 BMS ONLY

© COMBATSIM CHECKLISTS 2011

AIRPORT DIAGRAM

Date: 26 May 2011

TACAN: 058X	TWR: 368.1/119.7	TRANS LEVEL: FL140	TRANS ALT: 14000ft	GPS: N37°59,158' E126°01.761'	ELEV: 248'
----------------	---------------------	-----------------------	-----------------------	-------------------------------------	---------------



AIRPORT DIAGRAM

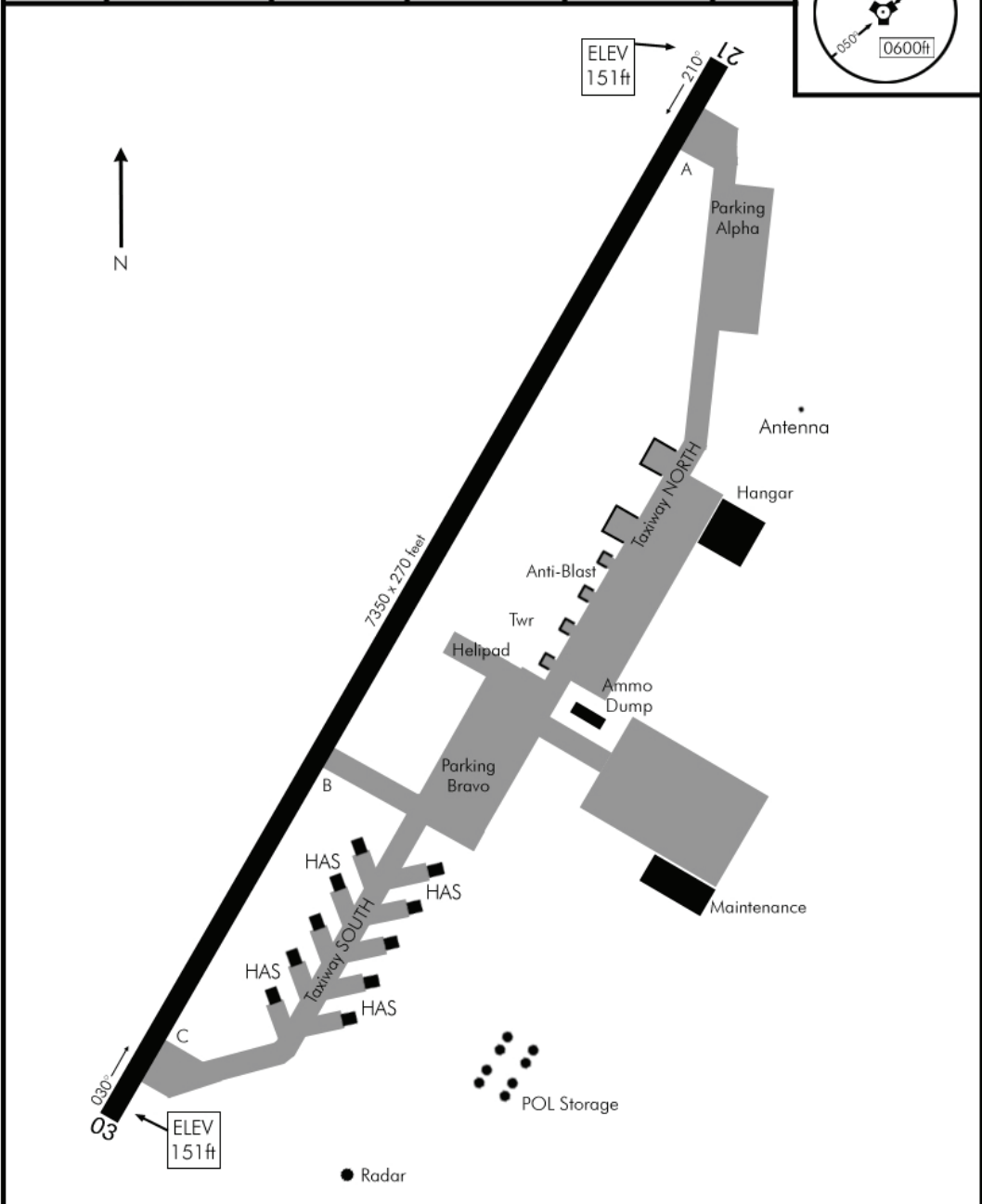
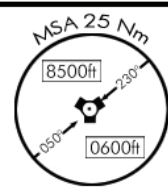
© COMBATSIM CHECKLISTS 2011

NOT FOR REAL NAVIGATION - FALCON 4 BMS ONLY

AIRPORT DIAGRAM

Date: 31 May 2011

TACAN:	TWR:	TRANS ALT:	TRANS LEVEL:	GPS:	ELEV:
N.A.	349.9/118.07	14000ft	FL140	N41°27.626' E131°48.613'	151'



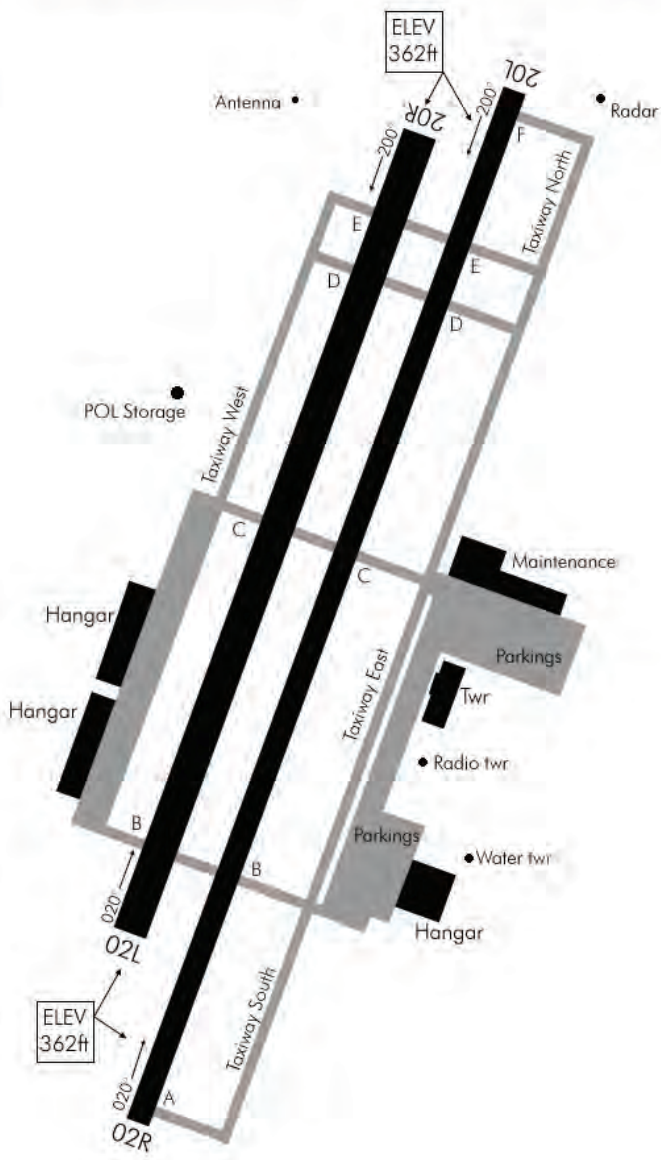
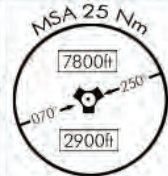
AIRPORT DIAGRAM

© COMBATSIM CHECKLISTS 2011

AIRPORT DIAGRAM

Date: 1 June 2011

TACAN:	TWR:	TRANS LEVEL:	TRANS ALT:	GPS:	ELEV:
N.A.	270.8/120.6	FL140	14000 Ft	N39°58.840' E125°51.027'	362'



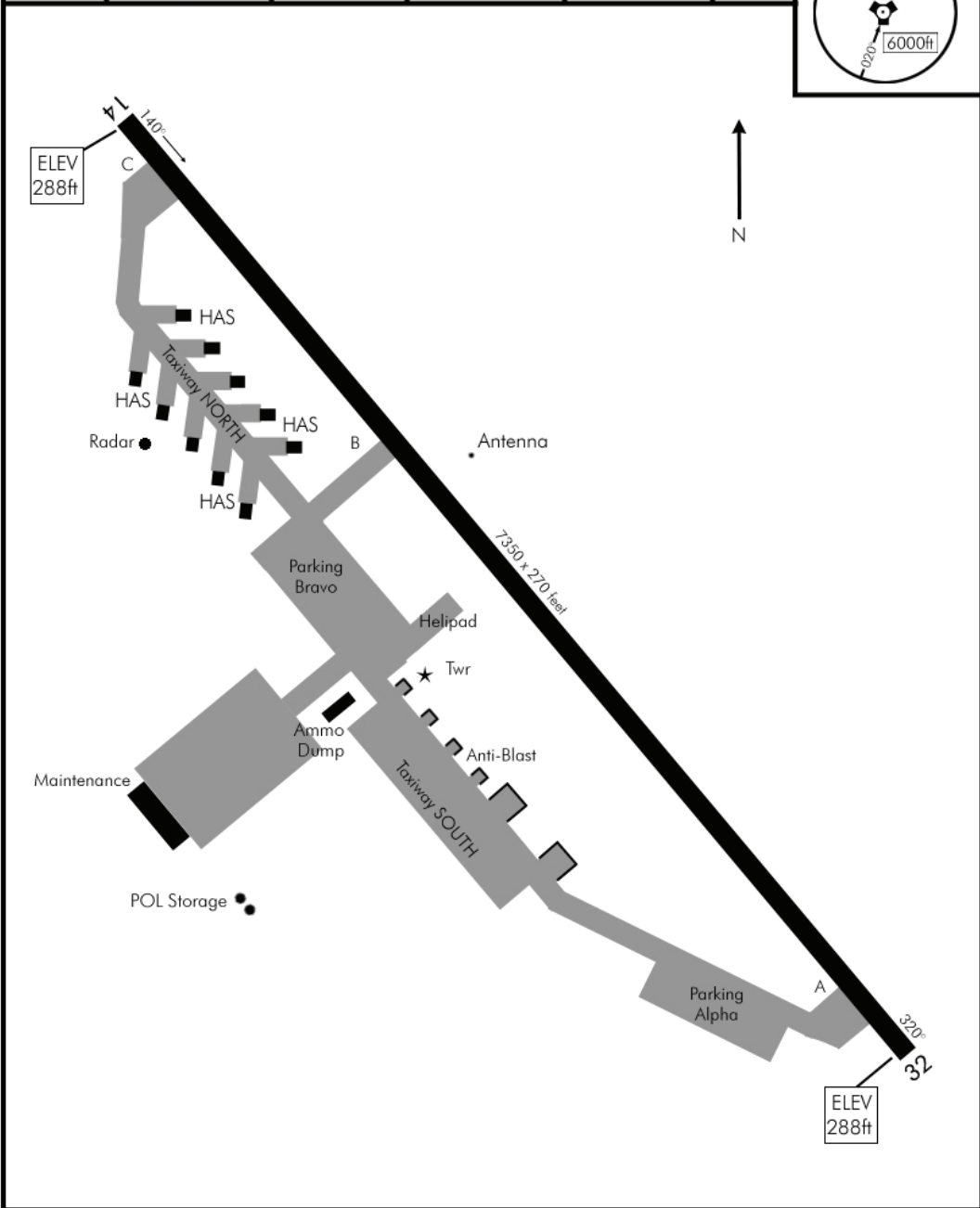
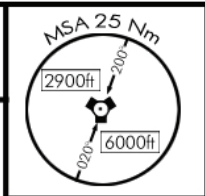
AIRPORT DIAGRAM

NOT FOR REAL NAVIGATION - FALCON 4 BMS ONLY

AIRPORT DIAGRAM

Date: 27 May 2011

TACAN:	TWR:	TRANS ALT:	TRANS LEVEL:	GPS:	ELEV:
N.A.	264.9/128.2	14000ft	FL140	N39°37,849' E126°44.436'	288'

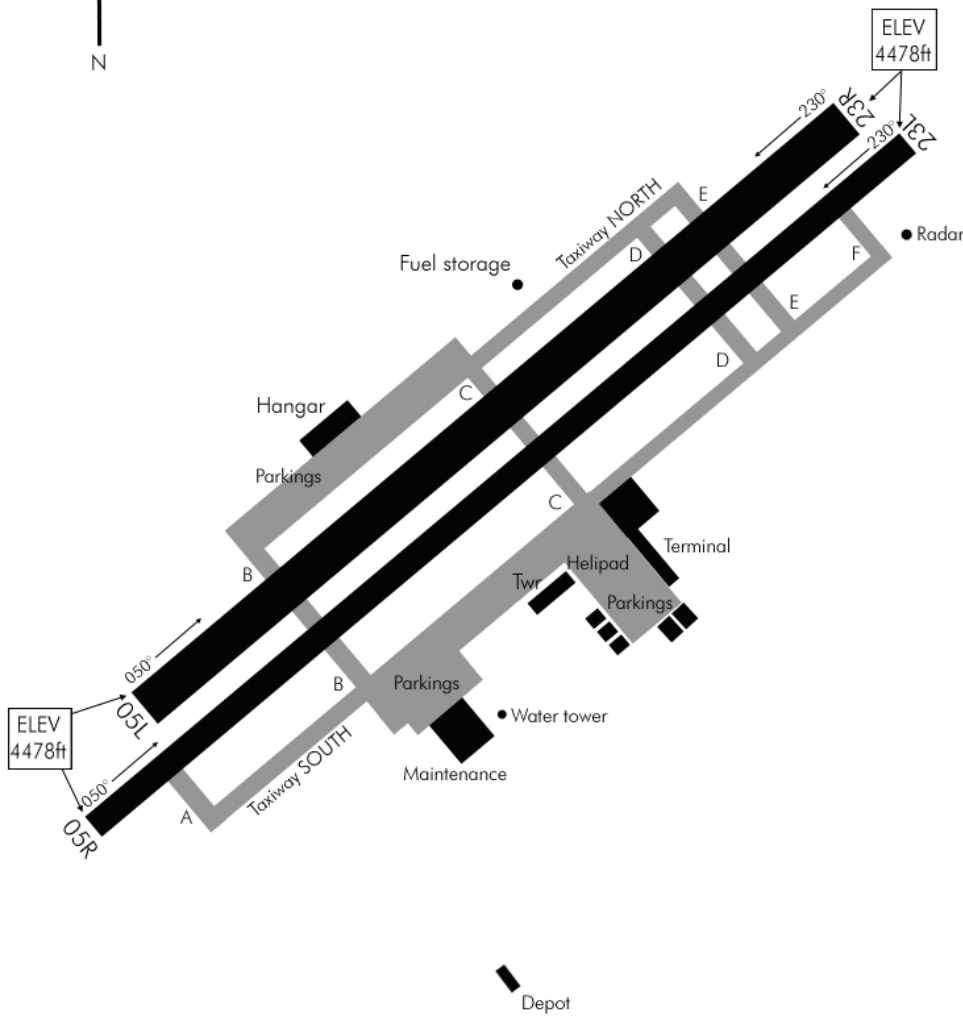
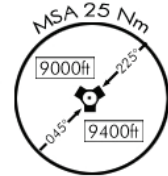


AIRPORT DIAGRAM

AIRPORT DIAGRAM

Date: 27 May 2011

TACAN: 050X	TWR: 299.1/131.8	TRANS LEVEL: FL140	TRANS ALT: 14000ft	GPS: N41°55,243' E130°13.612'	ELEV: 4478'
----------------	---------------------	-----------------------	-----------------------	-------------------------------------	----------------



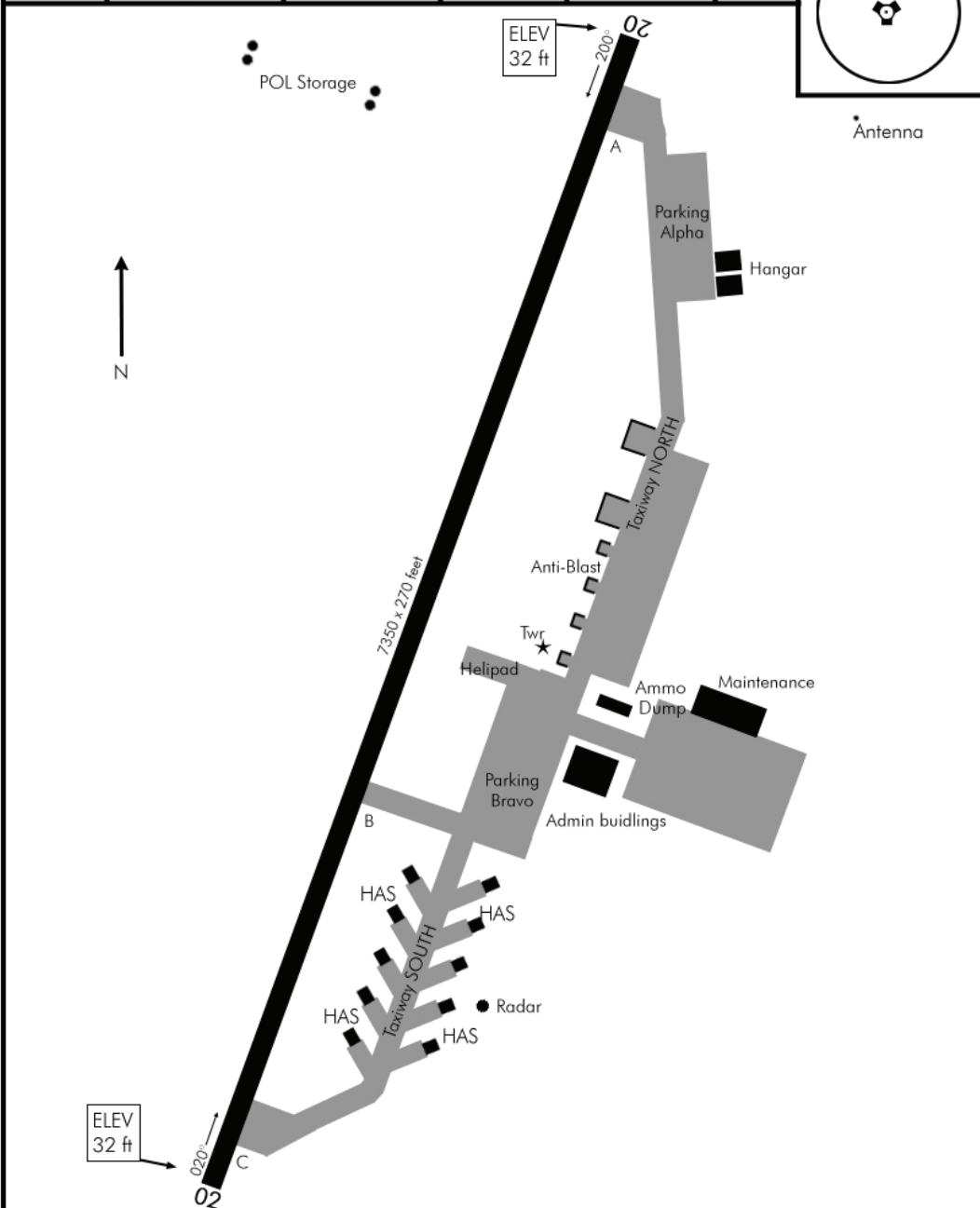
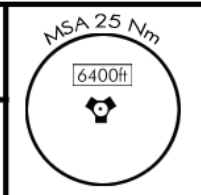
AIRPORT DIAGRAM

NOT FOR REAL NAVIGATION - FALCON 4 BMS ONLY

AIRPORT DIAGRAM

Date: 30 May 2011

TACAN: N.A	TWR: 343.8/136.6	TRANS LEVEL: FL140	TRANS ALT: 14000 Ft	GPS: N39°47,577' E128°47.130'	ELEV: 32'
---------------	---------------------	-----------------------	------------------------	-------------------------------------	--------------



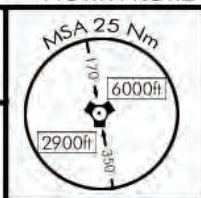
AIRPORT DIAGRAM

NOT FOR REAL NAVIGATION - FALCON 4 BMS ONLY

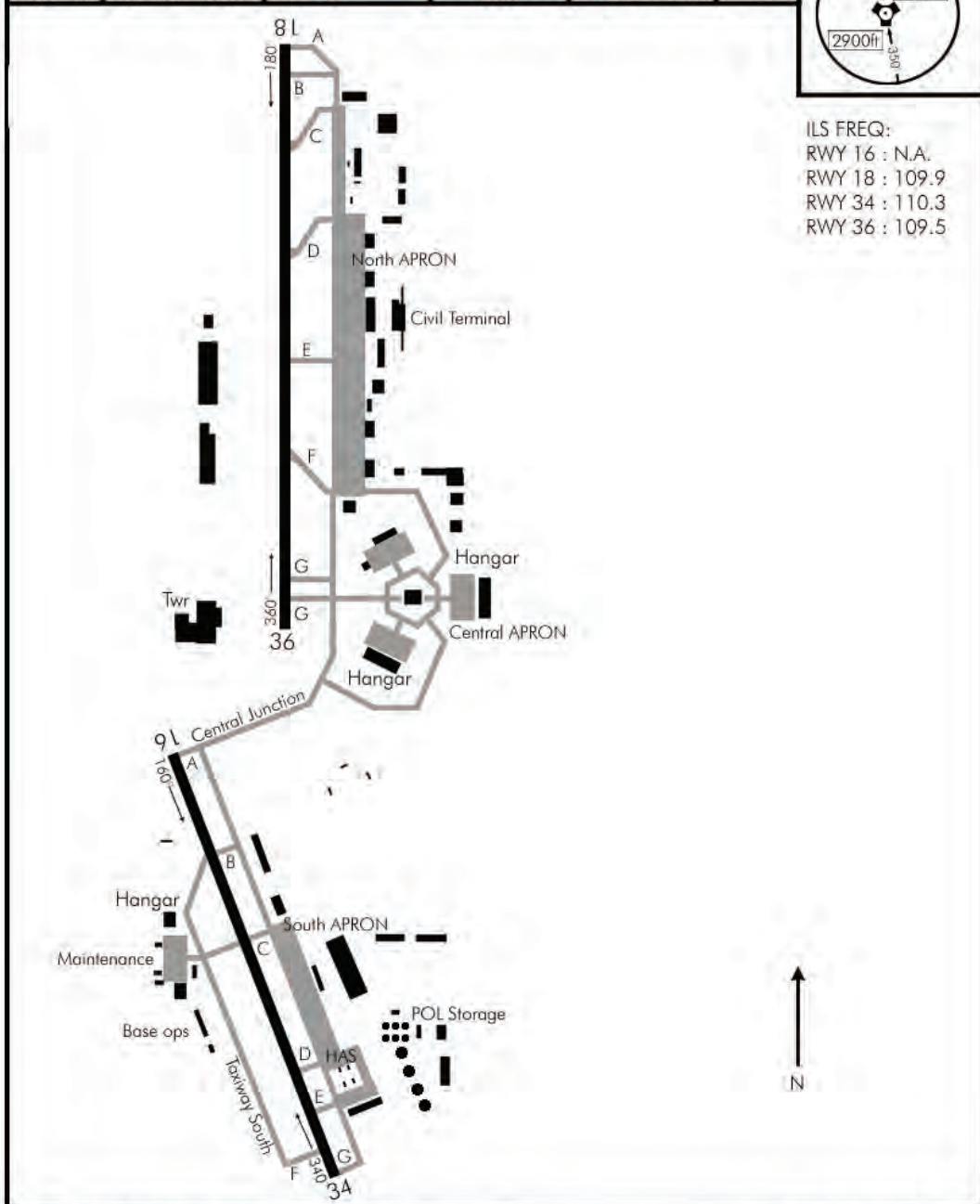
AIRPORT DIAGRAM

Date: 27 May 2011

TACAN:	TWR:	TRANS LEVEL:	TRANS ALT:	GPS:	ELEV:
051X	264.0/133.0	FL140	14000 Ft	N39°15.720' E126°21.840'	174'



ILS FREQ:  
RWY 16 : N.A.  
RWY 18 : 109.9  
RWY 34 : 110.3  
RWY 36 : 109.5



AIRPORT DIAGRAM

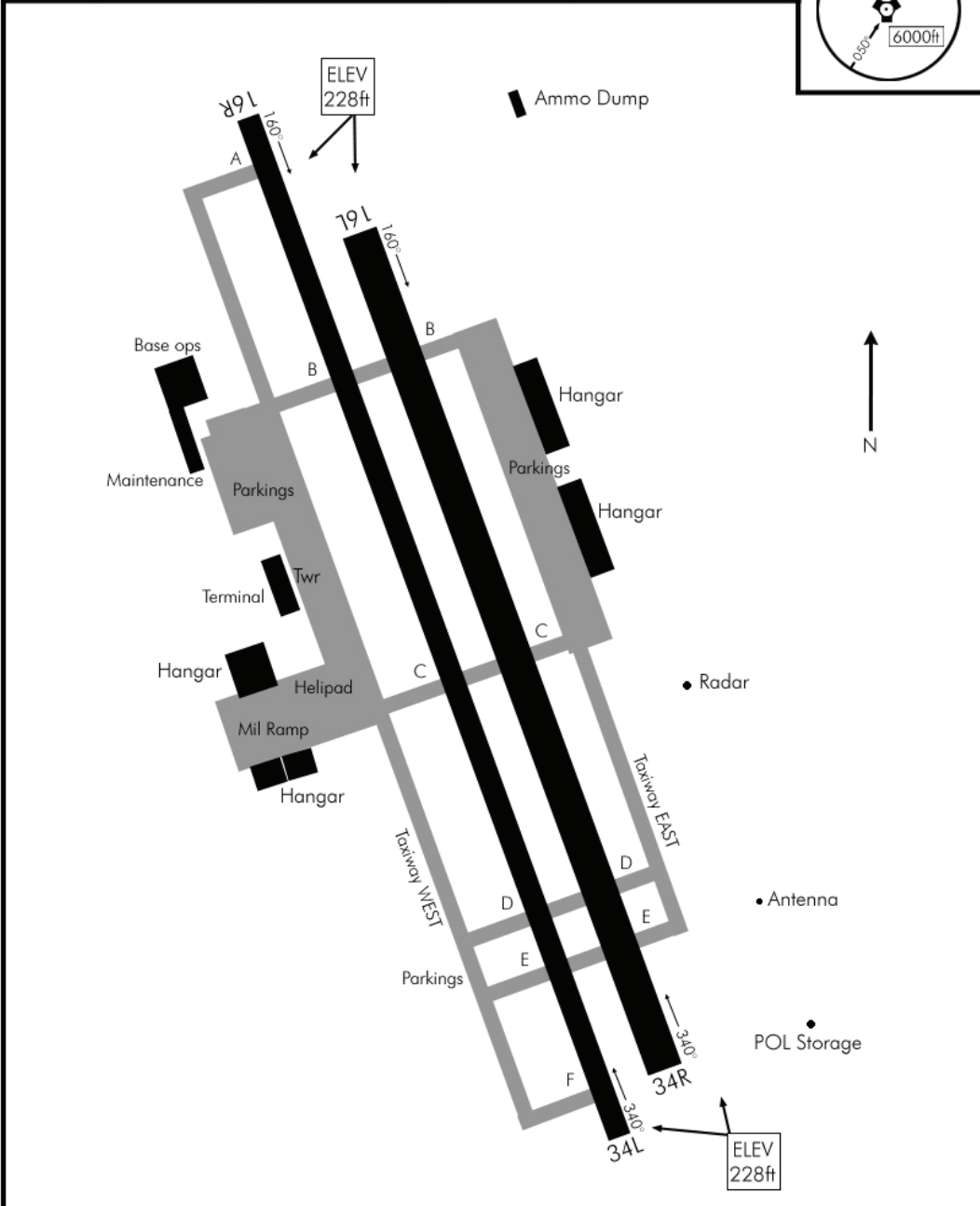
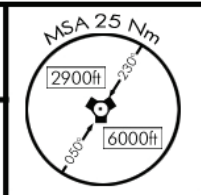
NOT FOR REAL NAVIGATION - FALCON 4 BMS ONLY



AIRPORT DIAGRAM

Date: 1 June 2011

TACAN:	TWR:	TRANS LEVEL:	TRANS ALT:	GPS:	ELEV:
N.A.	253.1/124.0	FL140	14000ft	N39°26,670' E126°42.318'	228'



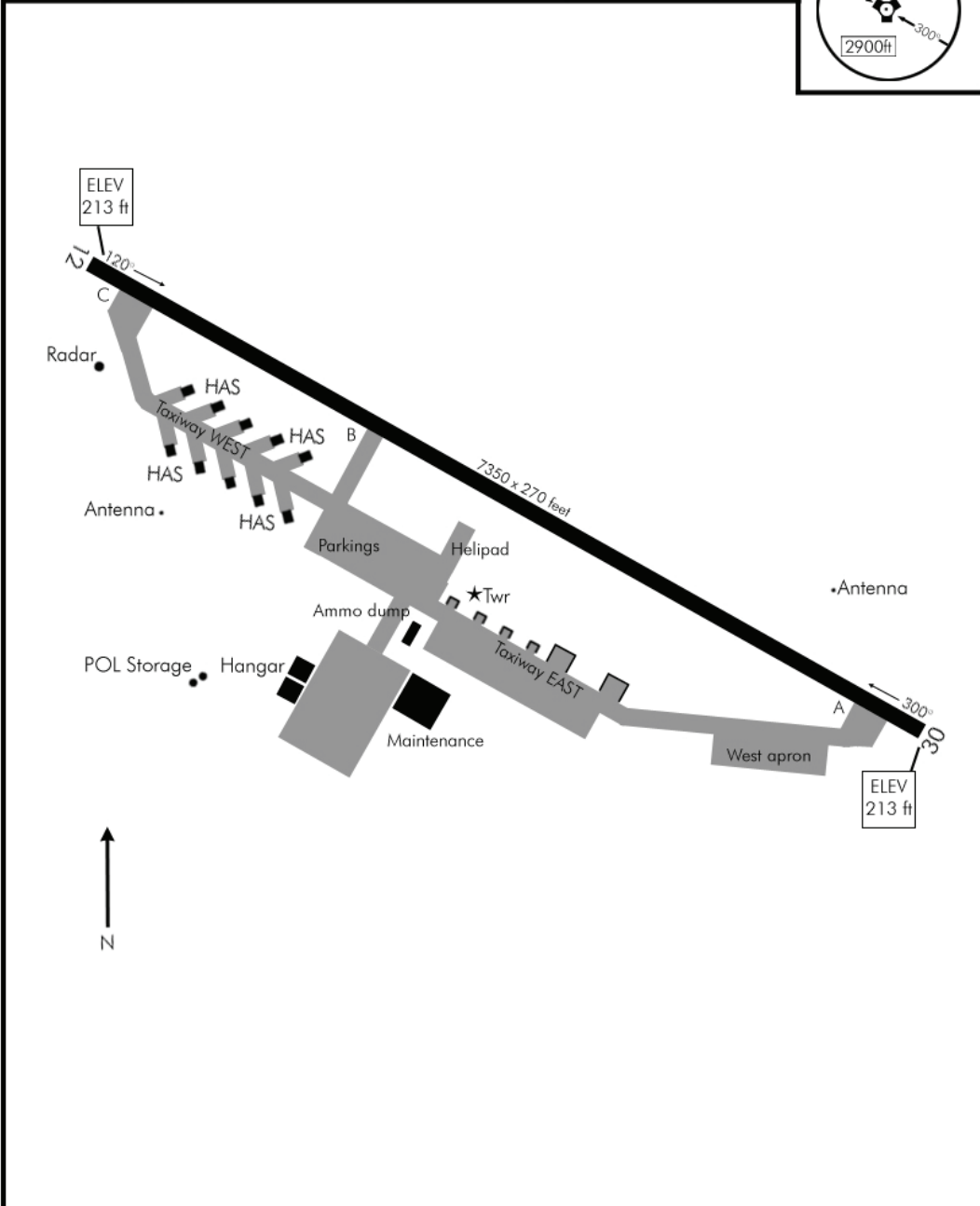
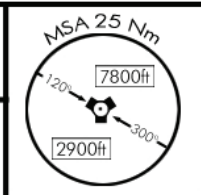
AIRPORT DIAGRAM

NOT FOR REAL NAVIGATION - FALCON 4 BMS ONLY

AIRPORT DIAGRAM

Date: 27 May 2011

TACAN:	TWR:	TRANS ALT:	TRANS LEVEL:	GPS:	ELEV:
N.A.	275.5/119.02	14000ft	FL140	N39°57,415' E126°10.724'	213'



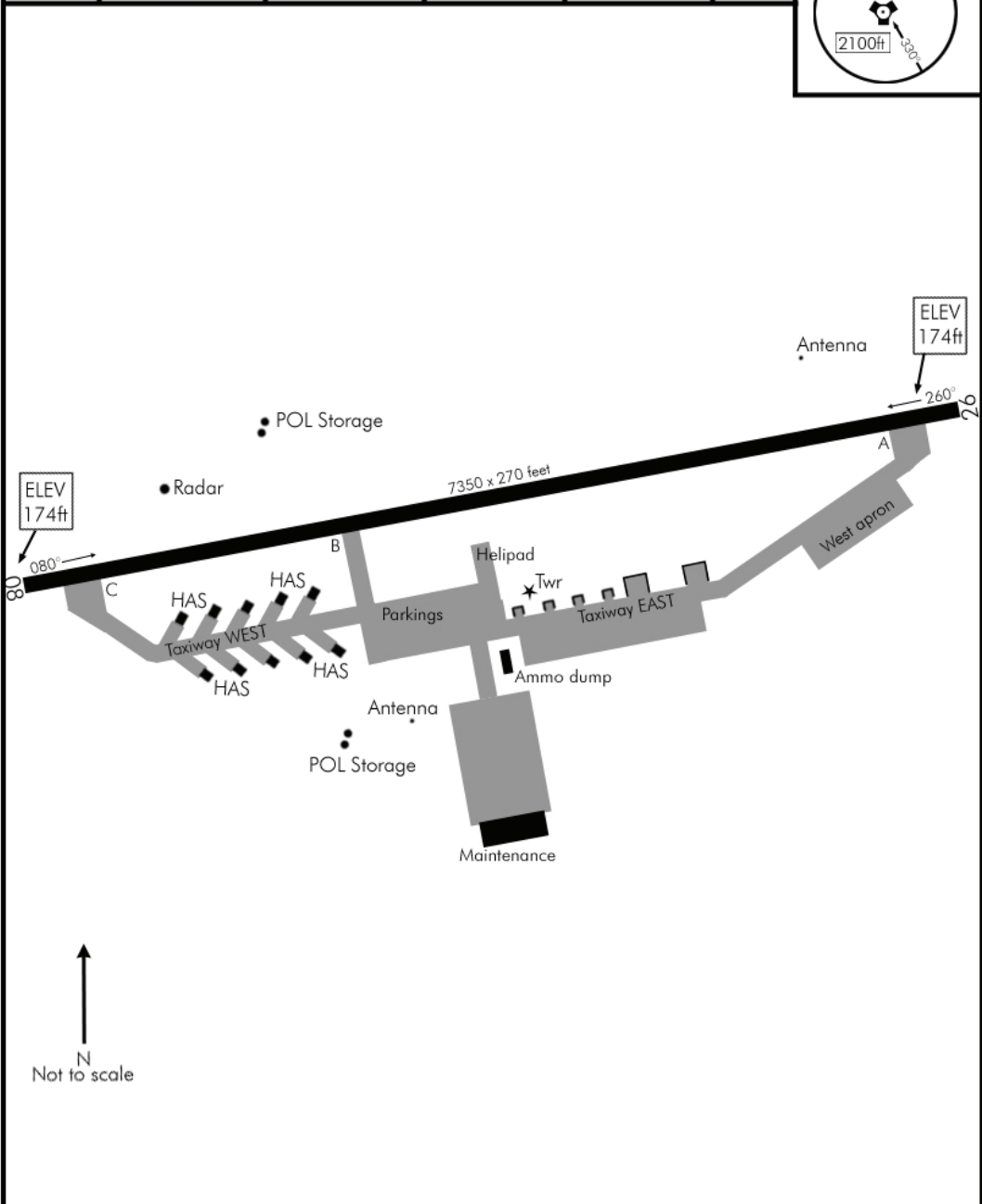
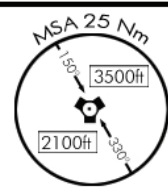
AIRPORT DIAGRAM

NOT FOR REAL NAVIGATION - FALCON 4 BMS ONLY

AIRPORT DIAGRAM

Date: 31 May 2011

TACAN:	TWR:	TRANS LEVEL:	TRANS ALT:	GPS:	ELEV:
N.A.	288.7/117.3	FL140	14000ft	N38°08,607' E125°51.628'	174'



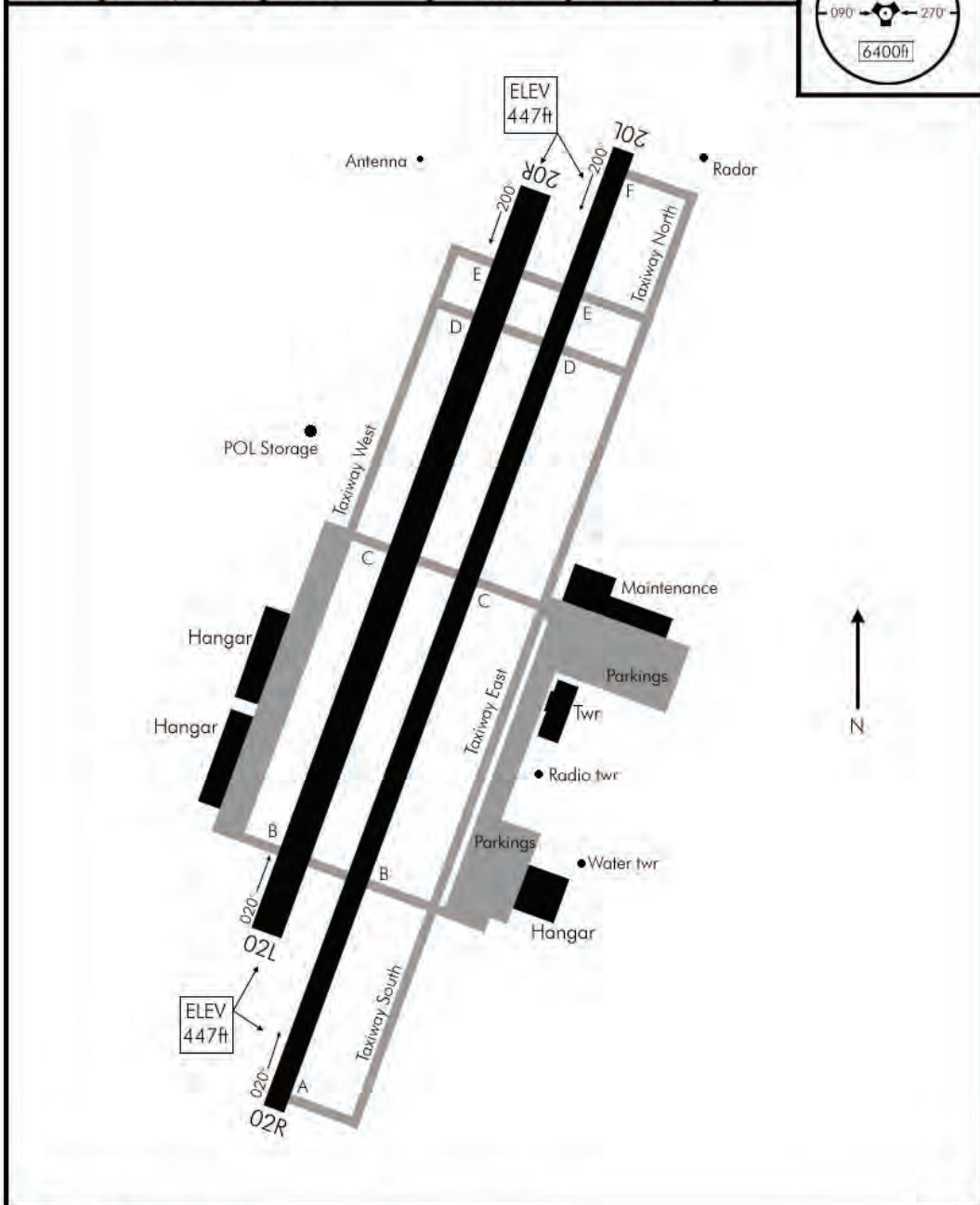
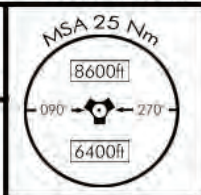
AIRPORT DIAGRAM

NOT FOR REAL NAVIGATION - FALCON 4 BMS ONLY

AIRPORT DIAGRAM

Date: 1 June 2011

TACAN:	TWR:	TRANS LEVEL:	TRANS ALT:	GPS:	ELEV:
N.A.	324.8/124.6	FL140	14000 Ft	N40°03,690' E128°59.915'	447'



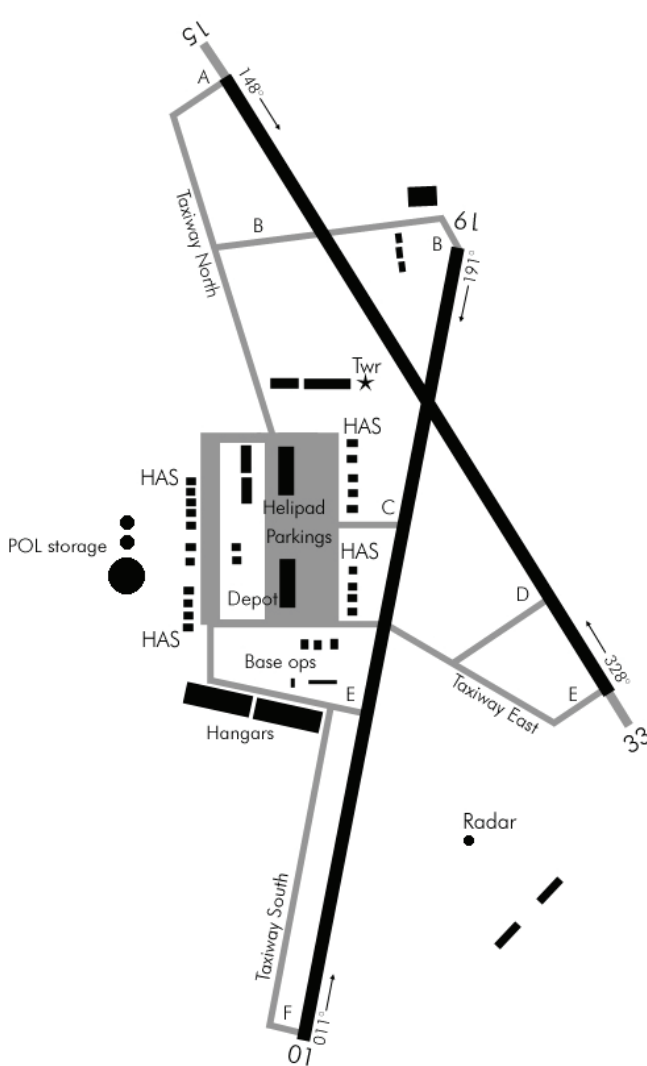
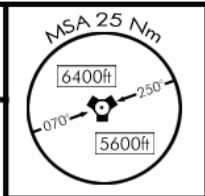
AIRPORT DIAGRAM

NOT FOR REAL NAVIGATION - FALCON 4 BMS ONLY

AIRPORT DIAGRAM

Date: 26 May 2011

TACAN: 054X	TWR: 244.4/123.8	TRANS LEVEL: FL140	TRANS ALT: 14000ft	GPS: N39°13,084' E128°45.577	ELEV: 14'
----------------	---------------------	-----------------------	-----------------------	------------------------------------	--------------



AIRPORT DIAGRAM

NOT FOR REAL NAVIGATION - FALCON 4 BMS ONLY

KOREAN NAVIGATION VOLUME  
AIRPORT CHARTS  
PEOPLE'S REPUBLIC of CHINA

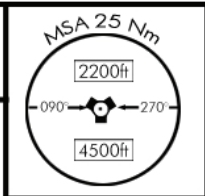


NOT FOR REAL NAVIGATION - FALCON 4 BMS ONLY

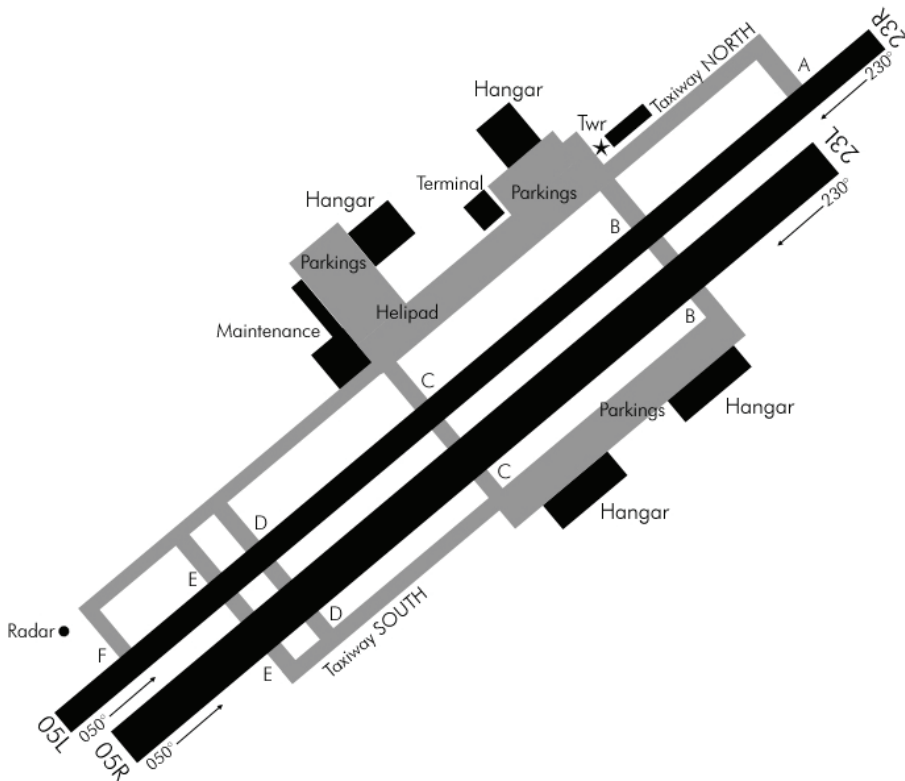
AIRPORT DIAGRAM

Date: 1 June 2011

TACAN: 088X	TWR: 395.5/151.9	TRANS LEVEL: FL140	TRANS ALT: 14000ft	GPS: N41°55,587' E123°37.946'	ELEV: 254'
----------------	---------------------	-----------------------	-----------------------	-------------------------------------	---------------



POL storage  
••

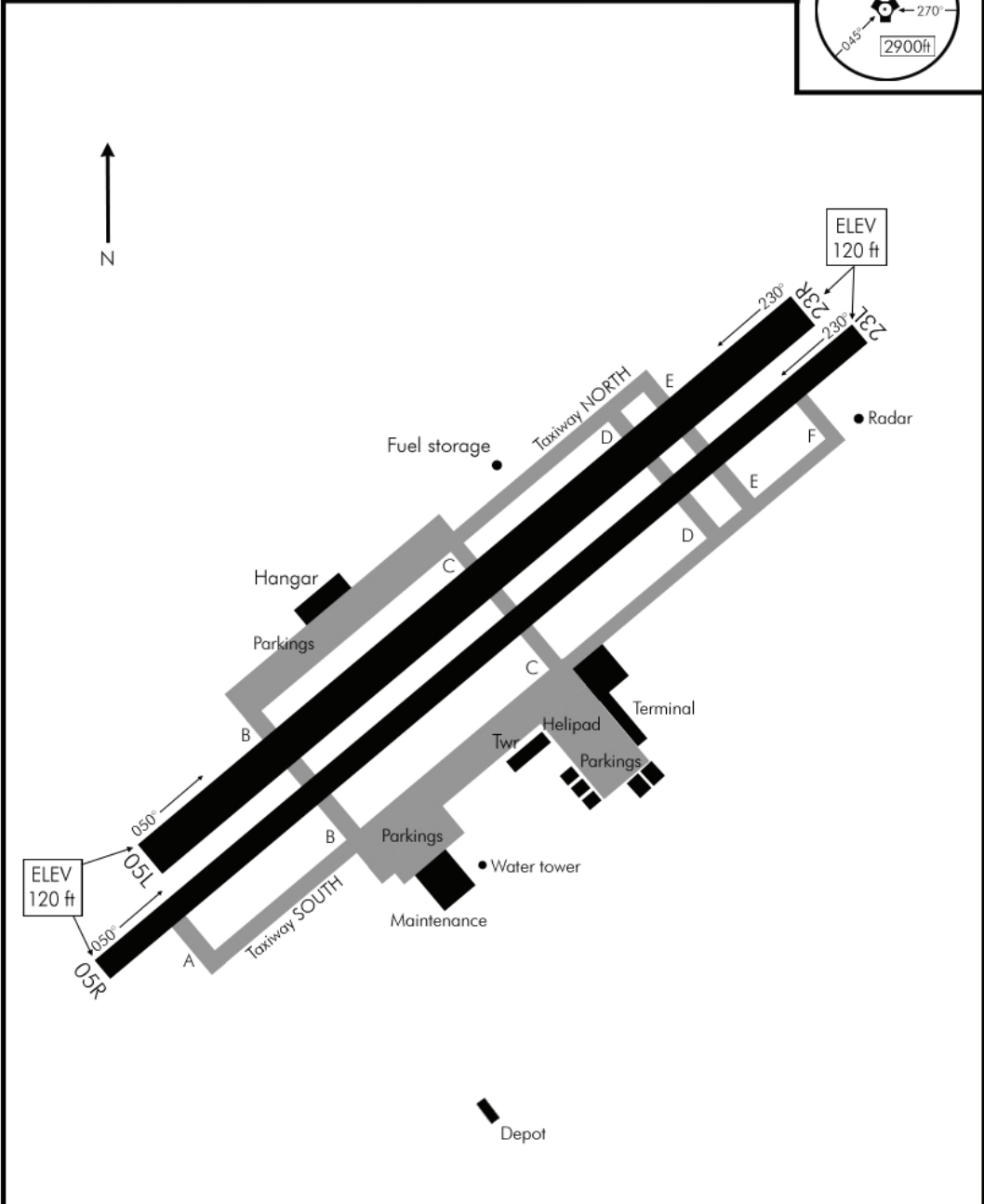
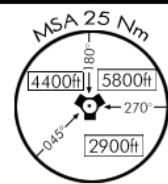


AIRPORT DIAGRAM

AIRPORT DIAGRAM

Date: 27 May 2011

TACAN: 055X	TWR: 372.0/136.0	TRANS LEVEL: FL140	TRANS ALT: 14000ft	GPS: N40°15,017' E125°01.967'	ELEV: 120'
----------------	---------------------	-----------------------	-----------------------	-------------------------------------	---------------



AIRPORT DIAGRAM



KOREAN NAVIGATION VOLUME  
AIRPORT CHARTS  
RUSSIA

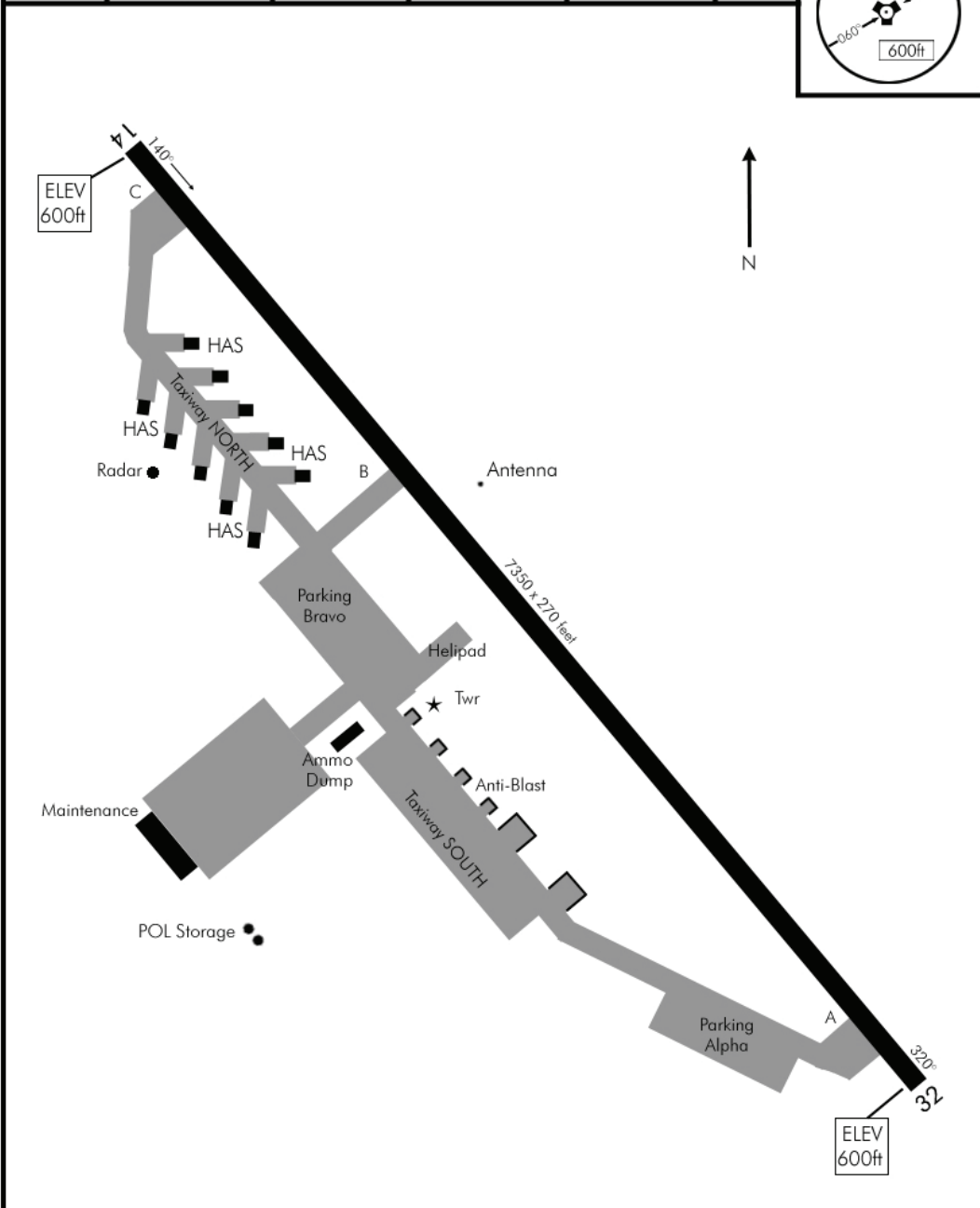
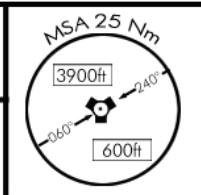


NOT FOR REAL NAVIGATION - FALCON 4 BMS ONLY

AIRPORT DIAGRAM

Date: 27 May 2011

TACAN:	TWR:	TRANS ALT:	TRANS LEVEL:	GPS:	ELEV:
N.A.	398.8/149.9	14000ft	FL140	N42°59,916' E134°00.718'	600'



AIRPORT DIAGRAM

© COMBATSIM CHECKLISTS 2011